

Freight Elevator  
Landing Doors  
Biparting  
Slide-up

Freight Elevator Doors Since 1905



We still service equipment we built 50 years ago

Car Doors  
Car Enclosures  
Entrance Frames  
Modernization

### The Peelle Company

34 Central Avenue, Hauppauge, New York 11788-4734  
1-631-231-6000 • 1-800-645-1056 • FAX: 1-631-231-6059 www.peelldoor.com

October 18, 2005

Mr. Robert Caporale, Editor  
Elevator World, Inc.  
PO Box 6507  
Mobile, AL 36660

Mr. Curtis Forney, Executive Director  
NAVTP  
2107 Pogue Avenue  
Cincinnati, OH 45208

Ms. Patty Bonner, Editor  
NAEC – Main Line  
1298 Wellbrook Circle, NE  
Conyers, GA 30012-3872

Ms. Dorothy M Stanlaske, Executive Director  
NAESA International  
8805 N 23<sup>rd</sup> Avenue, Suite 350  
Phoenix, Arizona 85021

Ms. Jackie Mortman, President  
Elevator Conference of New York  
PO Box 1371  
Long Island City, NY 11101

Ms. Odette Cloutier  
Canadian Elevator Contactors Association  
186 8120 No. 2 Road, Suite 201  
Richmond, British Columbia, Canada V7C 5J8

Mr. Lee Arnold  
Elevator Contractor of America  
8310 Pillsbury Avenue South  
Bloomington, MN 55420

### FOR IMMEDIATE RELEASE

The Peelle Company introduces the "Labor Saver" Control which offers 2-wire serial bus communication system among the Peelle components saving the elevator contractor valuable time and money. The savings are calculated based on fewer wires needed to operate the Peelle door system; 2-wires which also function as the power supply. This reduces the door and gate installation time by 1/3, additionally; Peelle is also providing the wiring material and junction boxes unique to the Peelle system. The Labor Saver system results in less installation time and no need to purchase transformers, junction boxes or wiring materials. The Labor Saver requires a small investment in Peelle equipment which is more than offset by the big dollars saved in field installation. The Labor Saver is available now, call Peelle at 1-800-645-1056 X 35 Bonnie or X19 Mike and ask for the Labor Saver on your next installation.

**The Peelle Company Limited** (Canadian & International Sales)  
195 Sandalwood Parkway West, Brampton, Ontario, Canada L7A 1J6  
1-905-846-4545 • 1-800-787-5020 • FAX: 1-905-846-2161  
www.peelldoor.com

**Peelle Asia Pacific, Pte. Limited**  
46 Joo Chiat Road, Unit 208, Singapore 427370  
65-6743-6272 • FAX: 65-6743-3093

**USA Representatives:** Baltimore, Indianapolis, Pennsylvania, Washington D.C.

**International:** Argentina, Brazil, Denmark, France, Germany, Ireland, Italy, Malaysia, The Netherlands, Norway, Sweden, and UK

Freight Elevator  
Landing Doors  
Biparting  
Slide-up

Freight Elevator Doors Since 1905



We still service equipment we built 50 years ago

Car Doors  
Car Enclosures  
Entrance Frames  
Modernization

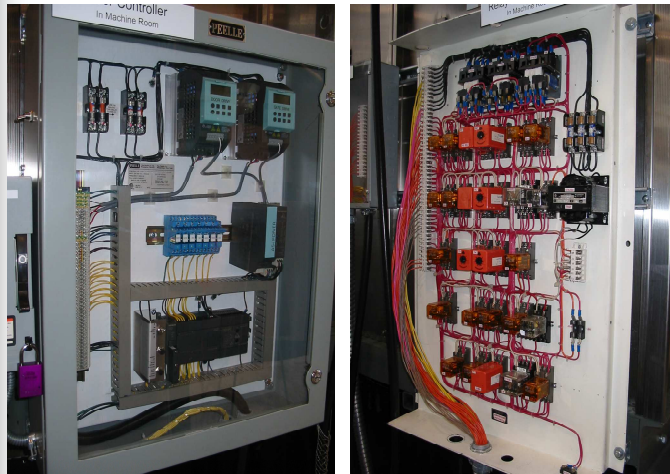
## The Peelle Company

34 Central Avenue, Hauppauge, New York 11788-4734

1-631-231-6000 • 1-800-645-1056 • FAX: 1-631-231-6059 [www.peelldoor.com](http://www.peelldoor.com)



## Labor Saver Controller



Sincerely,

The Peelle Company

Michael J Ryan  
Vice President of Sales and Marketing

**The Peelle Company Limited** (Canadian & International Sales)  
195 Sandalwood Parkway West, Brampton, Ontario, Canada L7A 1J6  
1-905-846-4545 • 1-800-787-5020 • FAX: 1-905-846-2161  
[www.peelldoor.com](http://www.peelldoor.com)

**Peelle Asia Pacific, Pte. Limited**  
46 Joo Chiat Road, Unit 208, Singapore 427370  
65-6743-6272 • FAX: 65-6743-3093

**USA Representatives:** Baltimore, Indianapolis, Pennsylvania, Washington D.C.

**International:** Argentina, Brazil, Denmark, France, Germany, Ireland, Italy, Malaysia, The Netherlands, Norway, Sweden, and UK