



Landing Doors

Door Panels are 12 gauge steel, rails and structural members are 3/16" steel. Doors include Vision Panels, Tension Latching, Plug Proof Locking & Sill Stops.

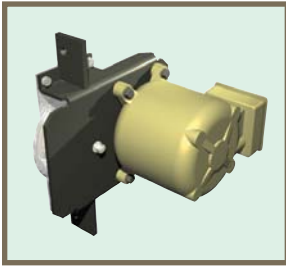
Construction Options

Door panels and rails shall be reused.



Car Gates

Gates are 10 gauge steel wire mesh, rails and structural members 3/16" steel. Bottom of gate is furnished with a rubber safety edge or Reversing Edge. Light Curtains can be added for non-contact protection.



Gate Motors

New gate motors in place of manual gate sheaves.

NEMA 1, 4, 4X, & 7

Chain

New gate chain is provided.

Construction Options

Plain Steel

Stainless Steel (washdown)



Car Enclosures / Cabs

Car Enclosures are 14 gauge steel, Light fixture are protected by a steel grill. Emergency exit switch is moisture resistant (IP67). Other options include, Wood Bumpers, Handrails and Strobe Lights.

Construction Options

Plain Steel

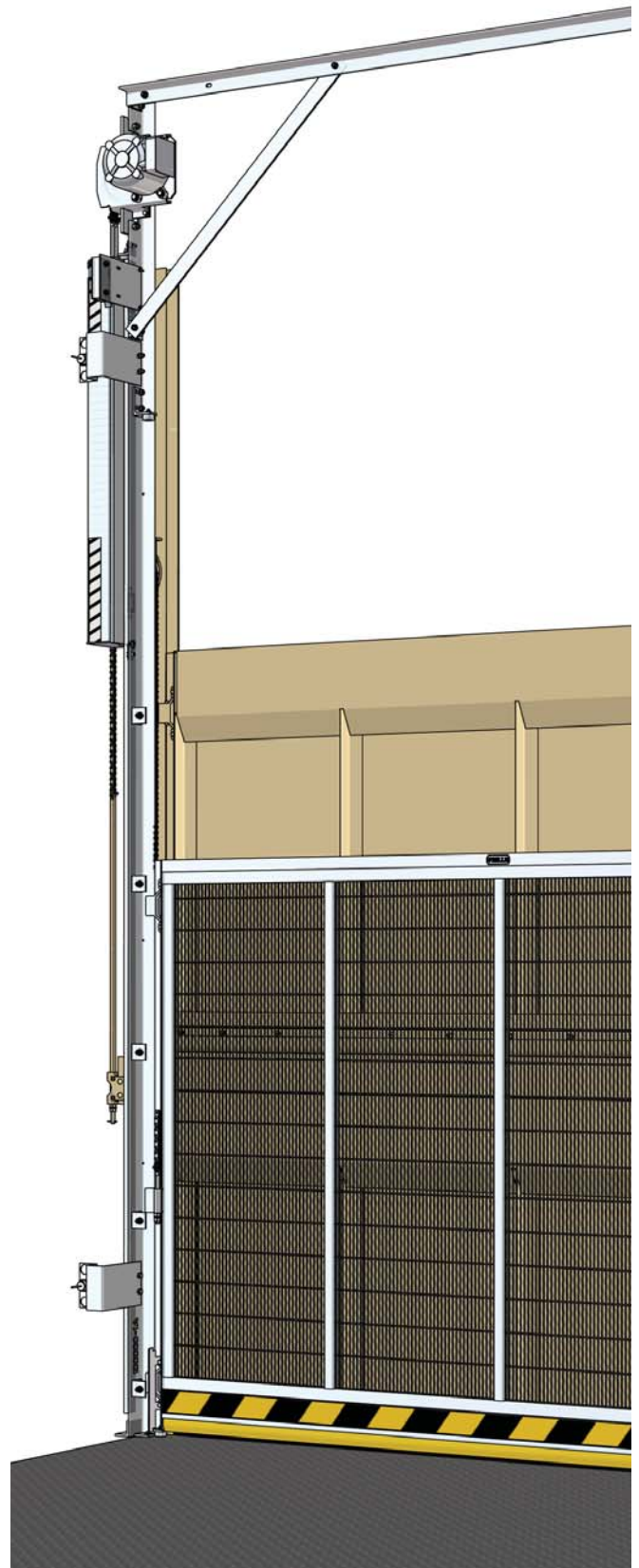
Stainless Steel (washdown)



Car Gate Contact

Gate Contacts provides a signal, indicating when the gate panel is in the closed position. Contacts are enclosed preventing damage from dirt and debris.

NEMA 1, 4, 4X, & 7

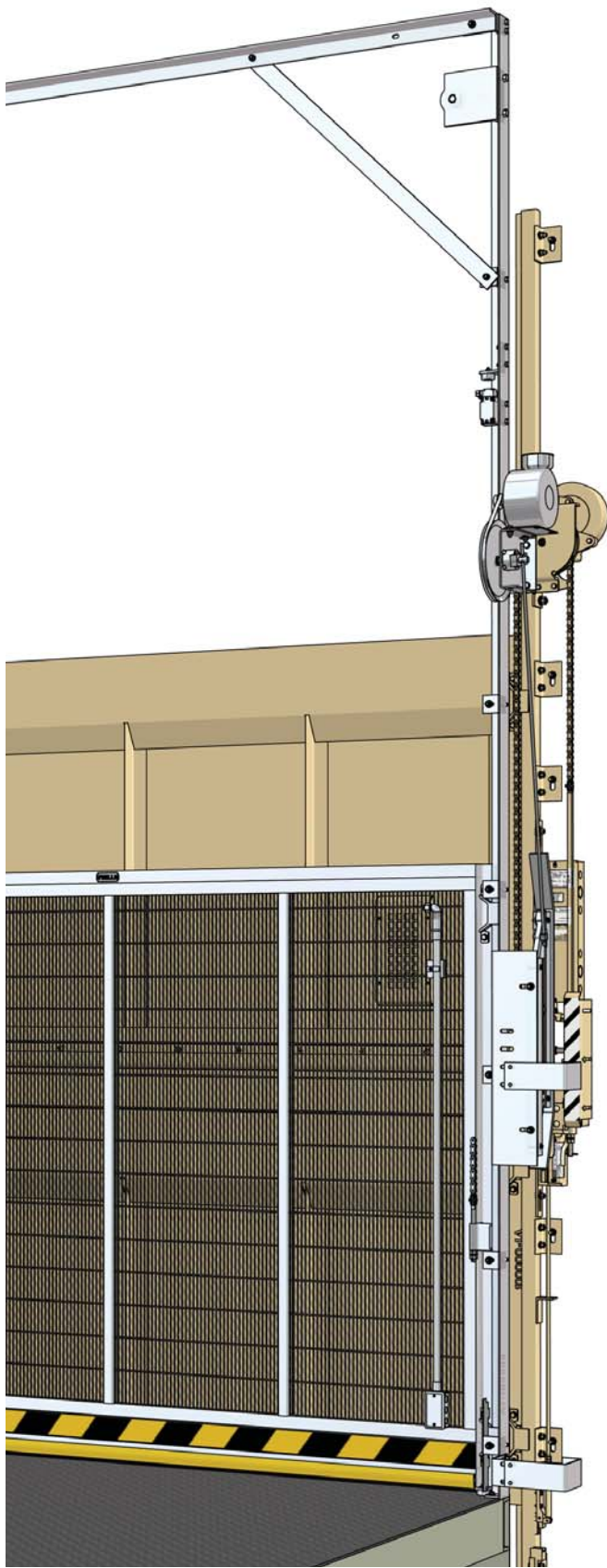


THE PEELLE COMPANY

FREIGHT DOORS | CAR GATES | CAR ENCLOSURES

T 1 800 787 5020 F 1 905 846 2161 www.peelldoor.com

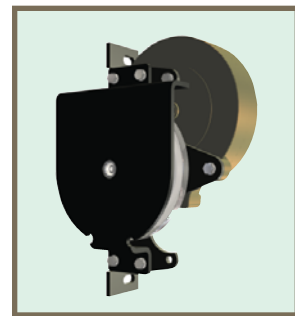
MOTORIZE EXISTING



Door Motors / Operators

New door motors in place of manual door sheaves.

NEMA 1, 4, 4X, & 7



Chain

New gate chain is provided.

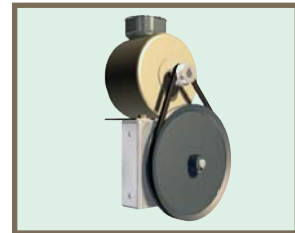
Construction Options

Plain Steel
Stainless Steel (washdown)

Retiring Cam

Peelle Retiring Cams are used to lock and unlock interlocks for all landings.

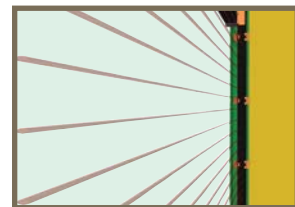
NEMA 1, 4, 4X, & 7



Light Curtain (non-contact)

This is a non-contact reversing device, located at either side of the opening. Breaking the infrared beams will send the Car Gate Panel back into the fully open position.

STD & IP67



Master Limit Arrangement

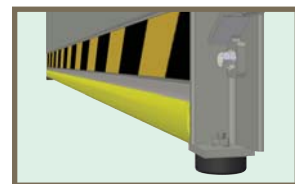
Peelle's Master Limit Arrangement replaces the geared limits found on older Peelle jobs. These sensors provide a non-contact way of setting limits for doors and gates.

IP67



Reversing Edge (contact)

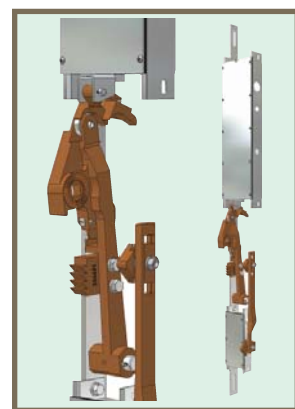
This is a contact reversing device, located on the bottom edge of the gate panel. Any object that comes in contact with the reversing edge will send the Car Gate Panel back into the fully open position.



Interlock (Tamper Resistant)

Interlock contacts are enclosed preventing damage from dirt and debris.

NEMA 1, 4, 4X, & 7



Wiring Package

Peelle can provide complete wiring and hoistway piping packages to suit any hoistway condition

NEMA 1, 4, 4X, & 7



THE PELLE COMPANY

FREIGHT DOORS | CAR GATES | CAR ENCLOSURES

T 1 800 787 5020 F 1 905 846 2161 www.peelldoor.com

**MOTORIZE
EXISTING**