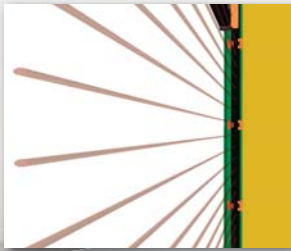




Solid Panel Car Gate

The Car Gate Panel encloses the full opening height and is a solid design, typically two-panel, with a vision panel for added passenger safety. A mechanical lock is provided to lock the car gate panel in the closed position during travel



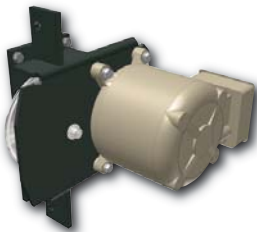
Light Curtain (non-contact)

This is a non-contact reversing device, located at either side of the opening. Breaking the infrared beams will send the Car Gate Panel back into the fully open position.



Reversing Edge (contact)

This is a contact reversing device, located on the bottom edge of the gate panel. Any object that comes in contact with the reversing edge will send the Car Gate Panel back into the fully open position.



600 RPM Gate Motor

The slower Gate Motor produces less motor winding noise during operation, and offers more time for egress.



Safety Operation Labels

Operation Labels, located inside the car and on the hall side of the Landing Doors. Operation Labels demonstrate proper operation of manual and motorized doors and gates.



Auto Open and Auto Close

Doors and Gates will automatically open when the car reaches the landing. Doors and Gates will automatically close after desired time, a warning buzzer will sound and strobe light will signal closing.



THE PEELLE COMPANY

FREIGHT DOORS | CAR GATES | CAR ENCLOSURES

T 1 800 787 5020 F 1 905 846 2161 www.peelldoor.com

**PASSENGER
FREIGHT LIFTS**