

# 247-EN



## STORAGE & HANDLING PROCEDURE



**THE PEELLE COMPANY**

FREIGHT DOORS | CAR GATES | CAR ENCLOSURES

**TECHNICAL SUPPORT** 1-800-787-5020 ext 275

**Guide No. 247-EN**

**STORAGE & HANDLING  
PROCEDURE**

Date: Jan 09 / 2024



# SAFETY INSTRUCTIONS

- Observe and follow all safety warnings attached to product
- Remove all slip, trip and fall hazards before moving any material
- Use proper lifting techniques
- Keep work site clean, dispose of all packaging after unpacking
- Inspect tools, lifting devices and carts before using
- Wear clean gloves when handling materials

## TOOLS REQUIRED

- Hammer
- Impact Gun with 5/16" [8mm] Socket
- Crowbar
- Utility knife
- 2 Pump Carts
- Pelle Door Dolly #0606
  - Note, forklift required for large crates



## NOTES

- There are no hazardous materials used in this equipment
- Obey all labels and warnings on packaging and boxes
- All wood used for packaging on export shipments has been approved for participation in the Canadian Wood Packaging Certification Program



**THE PELLE COMPANY**

FREIGHT DOORS | CAR GATES | CAR ENCLOSURES

**TECHNICAL SUPPORT** 1-800-787-5020 ext 275

1

**Guide No. 247-EN**

**STORAGE & HANDLING  
PROCEDURE**

Date: Jan 09 / 2024

# MOVING CRATES



## Method 1

- Use two pump carts at either end to lift and maneuver the crates
- Check crates for damage



## Method 2

- Use forklift to lift one end of the crate and drag or push into position



- Crates can also be lifted from the middle



**THE PEELLE COMPANY**

FREIGHT DOORS | CAR GATES | CAR ENCLOSURES

TECHNICAL SUPPORT 1-800-787-5020 ext 275

**Guide No. 247-EN**


**STORAGE & HANDLING  
PROCEDURE**

Date: Jan 09 / 2024

# UNLOADING EQUIPMENT



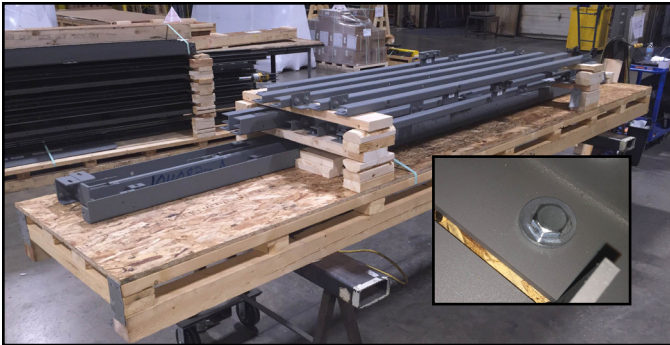
- Panels are individually tied to the crate

 IF YOU SEE THIS WARNING LABEL ON ONE OF YOUR LOWER PANELS TAKE EXTRA CARE.

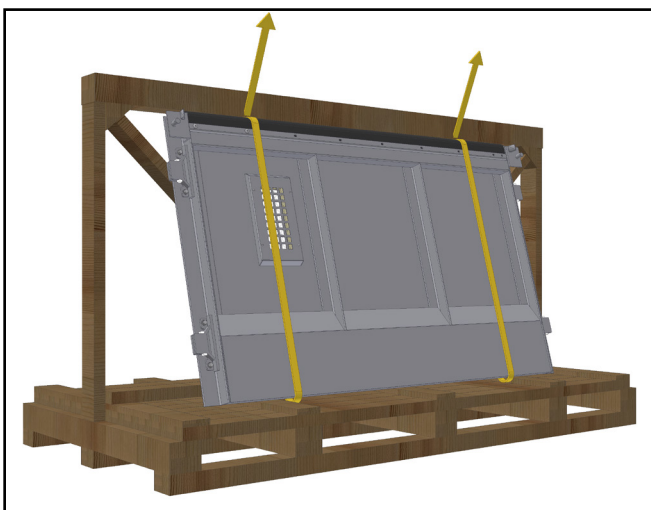
## **WARNING**

**Panel is top heavy  
Take extra care when  
removing the straps**

- Cut the strap for the outer panel first and remove from crate



- Unbolt guide rails and long material from the rail crate
- Using impact gun with 5/16" [8mm] socket
- Remove individual components



- Install lifting straps to the panel being removed
- Use lifting device to lift panel off the crate
- Keep panel upside down as they are top heavy



**THE PEELLE COMPANY**

FREIGHT DOORS | CAR GATES | CAR ENCLOSURES

TECHNICAL SUPPORT 1-800-787-5020 ext 275

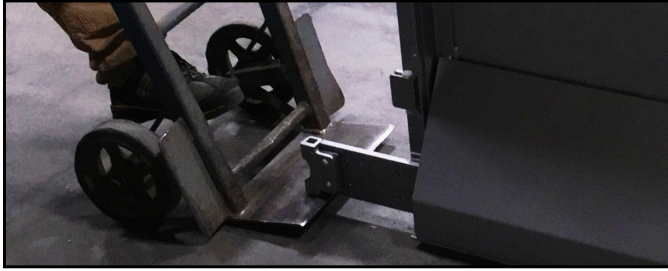
3

**Guide No. 247-EN**

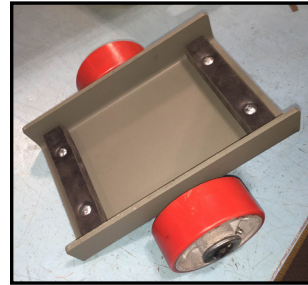
**STORAGE & HANDLING  
PROCEDURE**

Date: Jan 09 / 2024

# MOVING PANELS USING DOOR DOLLY



- Lift the panel at one end
- Slide the Peelle (0606) door dolly under the panel using the side of your foot
- Do not place your foot under the raised door panel



- Keep dolly slightly off center so panel will drag at one end
- Position dolly tight against the face of the door panel



- Place two hands on the panel
- Lean the panel slightly in towards yourself and begin to walk with the panel
- Large panels will require additional help



**THE PEELLE COMPANY**  
FREIGHT DOORS | CAR GATES | CAR ENCLOSURES  
TECHNICAL SUPPORT 1-800-787-5020 ext 275

4

**Guide No. 247-EN**  
STORAGE & HANDLING  
PROCEDURE

Date: Jan 09 / 2024

# STORAGE

When possible all product and hardware should remain strapped and wrapped on original crate unit ready to use.



## STANDARD PACKAGING NON WRAPPED

- When possible store material indoors in a climate controlled building, away from moisture and high traffic areas



## OPTIONAL PACKAGING WRAPPED

- Factory wrapped crates may be stored outdoors or in a non-climate controlled building
- Once unwrapped, if possible store material indoors in a climate controlled building and away from moisture and high traffic areas.



- When placing panels against a wall secure using chain

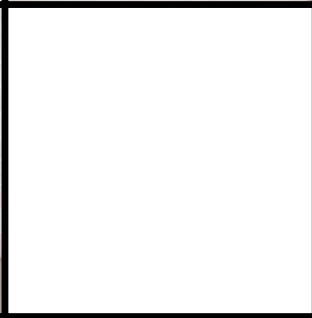


**THE PEELLE COMPANY**  
FREIGHT DOORS | CAR GATES | CAR ENCLOSURES  
TECHNICAL SUPPORT 1-800-787-5020 ext 275

5

**Guide No. 247-EN**  
STORAGE & HANDLING  
PROCEDURE

Date: Jan 09 / 2024



**THE PEELLE COMPANY**

FREIGHT DOORS | CAR GATES | CAR ENCLOSURES  
TECHNICAL SUPPORT 1-800-787-5020 ext 275

**Guide No. 247-EN**  
**STORAGE & HANDLING**  
**PROCEDURE**

Date: Jan 09 / 2024