

# Motorization & Re-Motorization

## FREIGHT ELEVATOR / GOODS LIFT DOORS

### PLC CONTROL SYSTEM

#### What is Peelle Motorization?

Upgrade your manually operated Peelle entrances.

#### What is Peelle Re-Motorization?

Upgrade your previous generation power operated Peelle system to our PLC Control System and related components.

#### Why Motorize or Re-Motorize?

Improve the efficiency of your application with automatic operation of Peelle doors.

Reduce door vandalism by removing the manual function from the user.

Extend the life and functionality of your existing Peelle entrances.

Increase safety & reduce liability with Peelle safety features.

Upgrading your equipment ensures replacement parts are readily available when needed.

#### What are the features of Peelle's PLC Control System?

- ✓ Direct replacement of older Peelle relay logic controllers
- ✓ Direct Replacement of older Peelle equipment
- ✓ Compatible hazardous environments, IP10, 1P54 & 1P56



THE PELLE COMPANY LTD  
195 Sandalwood Parkway West, Brampton, ON L7A 1J6

REPRESENTATIVES IN GERMANY, FRANCE, MIDDLE EAST, SINGAPORE & THE UK

1 800 787 5020

1 905 846 4545

SALES@PEELLEDOR.COM

PEELLEDOR.COM

JULY 2020

# Landing Door

## WHAT GETS RETAINED

- ✓ Door Panels
- ✓ Door Rails

## WHAT GETS REPLACED

- ✓ Power Door Operators / Manual Sheaves
- ✓ Chain & Connection Points
- ✓ Previous generation limit system (motorized door option)

## NEW EQUIPMENT PROVIDED

- ✓ Power Door Operators
- ✓ Roller Chain & Connection Points
- ✓ Master Limit Cam
- ✓ Door Open Final Limit (optional)
- ✓ Unlocking Device
- ✓ Interlock
- ✓ PLC Controller
- ✓ Safety Operation Labels

## OPTIONAL EQUIPMENT

- ✓ Wiring Package

POWER DOOR OPERATORS

ROLLER CHAIN & CONNECTION POINTS

DOOR PANEL (RETAINED)

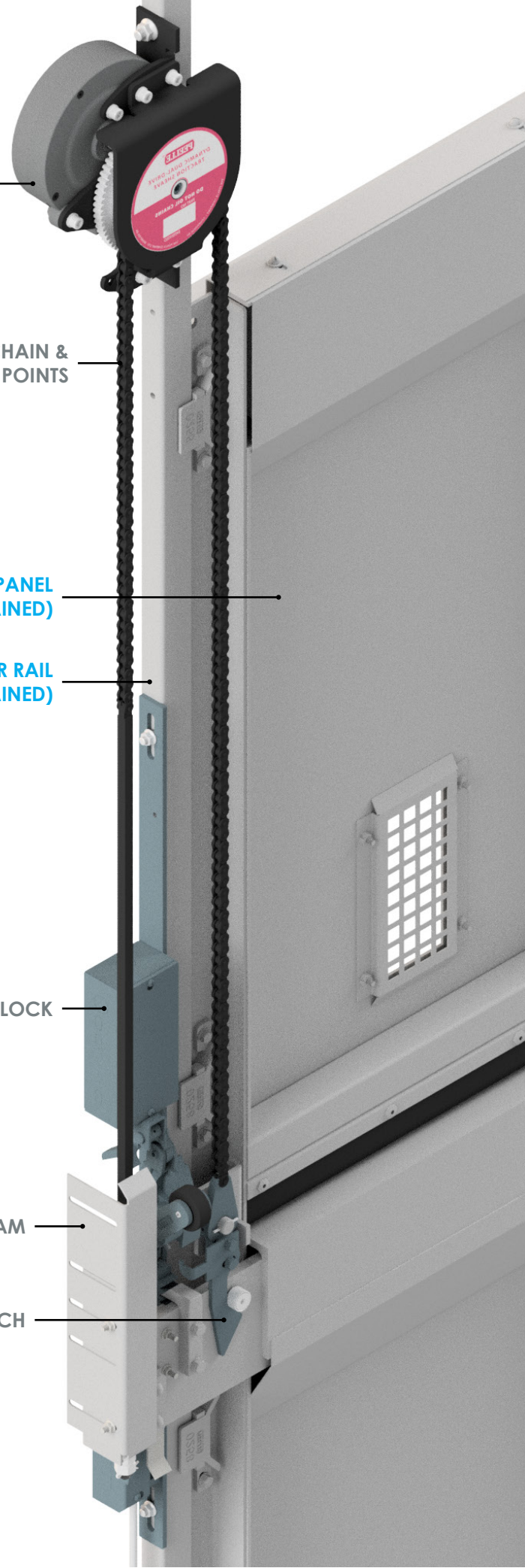
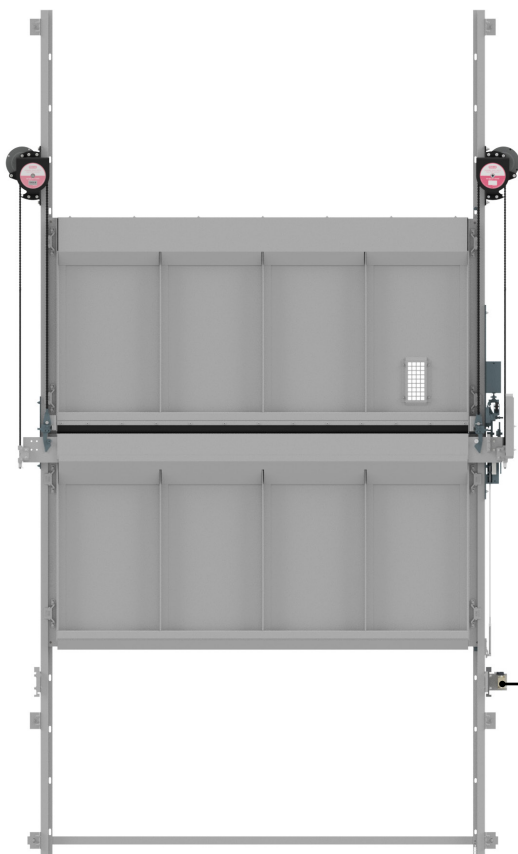
DOOR RAIL (RETAINED)

INTERLOCK

MASTER LIMIT CAM

TENSION LATCH

DOOR OPEN FINAL LIMIT (OPTIONAL)







## POWER DOOR OPERATORS

2 power door operators required for each landing door



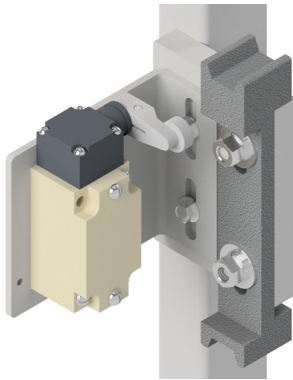
## ROLLER CHAIN & CONNECTION POINTS

All landing door chain will be replaced



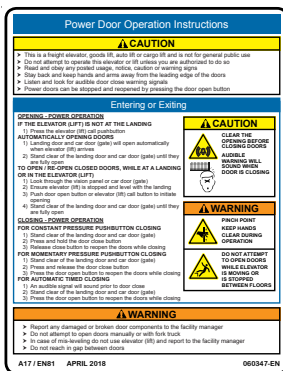
## UNLOCKING DEVICE

1 typically located at the lowest landing. Devices are self closing and self locking.



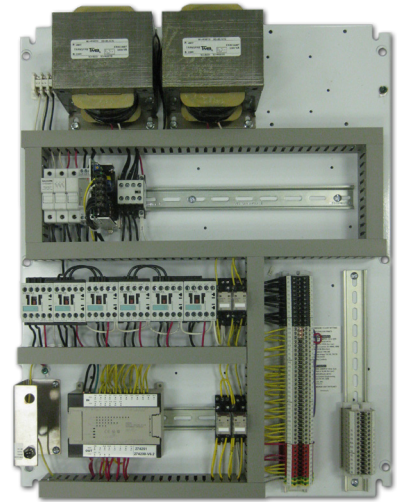
## DOOR OPEN FINAL LIMIT (OPTIONAL)

1 required for each landing door



## SAFETY OPERATION LABELS

Provided for each landing door, available in English, French, Spanish, German and Mandarin.



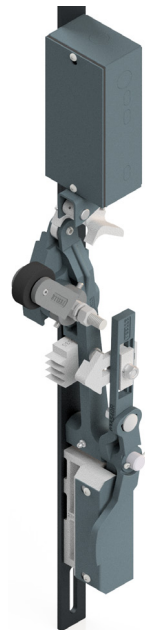
## PLC CONTROLLER

1 controller required & located in the machine room



## MASTER LIMIT CAM

1 required for each landing door



## INTERLOCK

1 Interlock required for each landing door

# Car Door

## WHAT GETS RETAINED

- ✓ Door Panels
- ✓ Door Rails
- ✓ Counterweight
- ✓ Previous generation limit system (motorized door option)

## WHAT GETS REPLACED

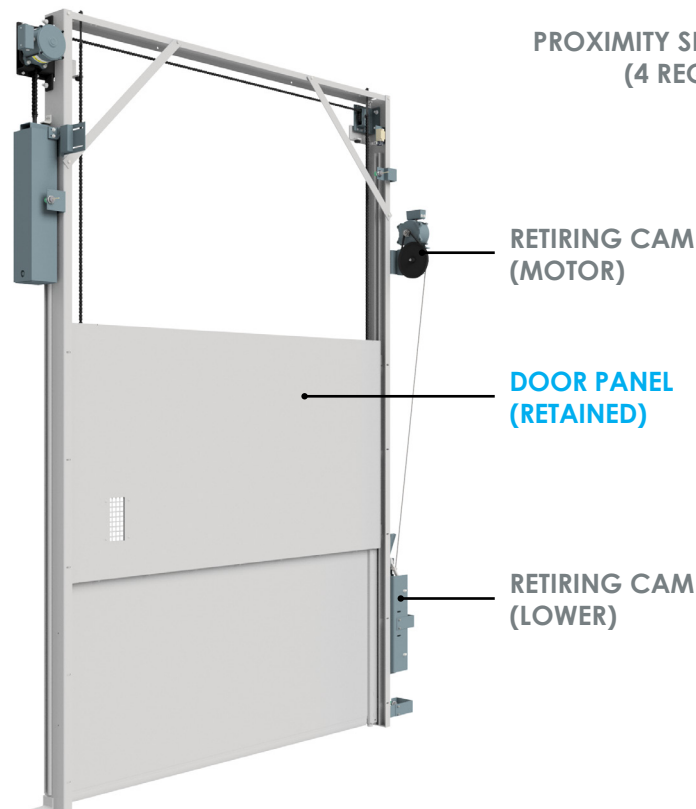
- ✓ Car Door Operators / Sprockets & Idlers
- ✓ Chain & Connection Points

## NEW EQUIPMENT PROVIDED

- ✓ Car Door Operator & Idler
- ✓ Roller Chain & Connection Points
- ✓ Proximity Sensors (4 required)
- ✓ Car Door Contact
- ✓ Car Door Lock
- ✓ Retiring Cam
- ✓ Car Door Open Final Limit
- ✓ Light Curtain
- ✓ Safety Operation Labels

## OPTIONAL EQUIPMENT

- ✓ Wiring Package



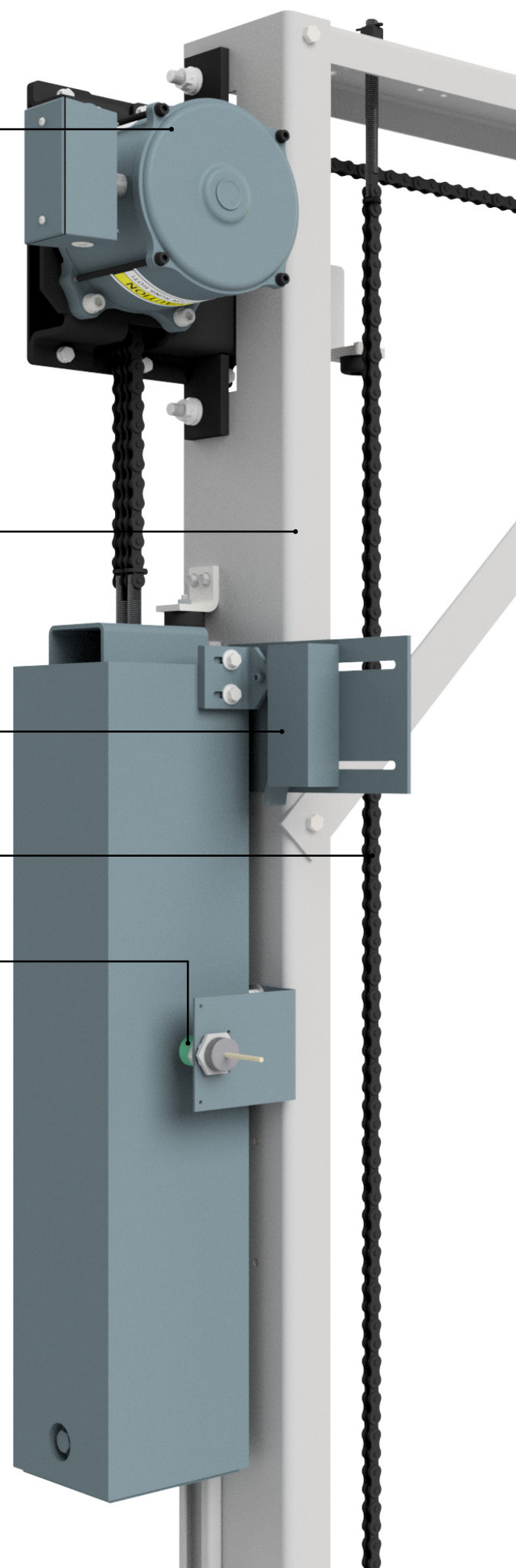
POWER DOOR OPERATORS

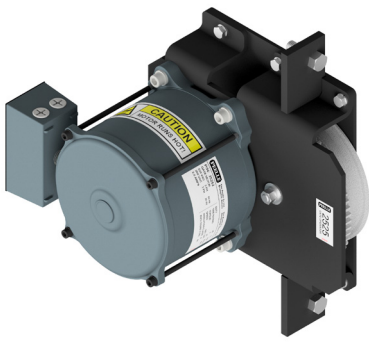
DOOR RAIL (RETAINED)

CAR DOOR CONTACT

ROLLER CHAIN & CONNECTION POINTS (NOT SHOWN)

PROXIMITY SENSORS (4 REQUIRED)





## POWER CAR DOOR OPERATOR

1 power car door operators required for each car door



## ROLLER CHAIN & CONNECTION POINTS (NOT SHOWN)

All car door chain will be replaced



## LIGHT CURTAINS

1 Set provided for each car door entrance.



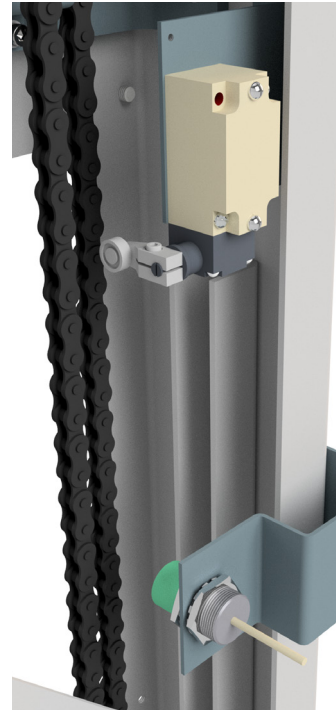
## CAR DOOR CONTACT

1 required for each car door



## CAR DOOR LOCK

1 required for each car door



## CAR DOOR OPEN FINAL LIMIT

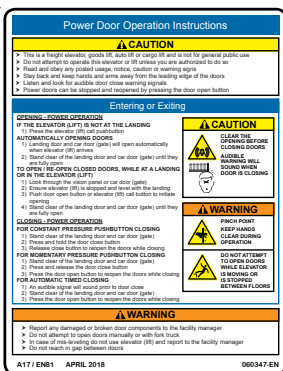
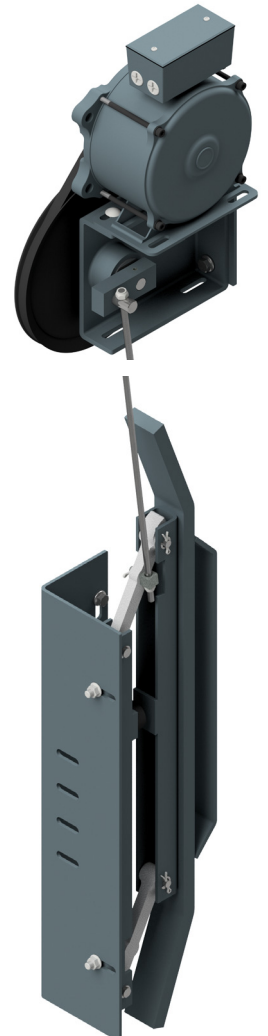
1 encoder required for each car door

## PROXIMITY SENSOR

4 required for each car door

## RETIRING CAM ASSEMBLY

1 Retiring cam provided. Mounted to the car door rail, used for unlocking the landing door interlock.



## SAFETY OPERATION LABELS

Provided for each car door, available in English, French, Spanish, German and Mandarin.