

Motorization & Re-Motorization

FREIGHT ELEVATOR / GOODS LIFT DOORS

WIRELESS CONTROL SYSTEM

What is Peelle Motorization?

Upgrade your manually operated Peelle entrances.

What is Peelle Re-Motorization?

Upgrade your previous generation power operated Peelle system to the latest Wireless Controller and related components.

Why Motorize or Re-Motorize?

Improve the efficiency of your application with automatic operation of Peelle doors.

Reduce door vandalism by removing the manual function from the user.

Extend the life and functionality of your existing Peelle entrances.

Increase safety & reduce liability with Peelle safety features.

Upgrading your equipment ensures replacement parts are readily available when needed.

What are the features of the Peelle Wireless Control System?

- ✓ Quiet & Smooth Operation
- ✓ Closed loop Feedback
- ✓ Self-Learning Technology
- ✓ VVVF Drive, ultimate open & close profile control
- ✓ Interactive LCD Display
- ✓ Minimum Energy Consumption
- ✓ Machine Room Less



THE PELLE COMPANY LTD
195 Sandalwood Parkway West, Brampton, ON L7A 1J6

REPRESENTATIVES IN GERMANY, FRANCE, MIDDLE EAST, SINGAPORE & THE UK

1 800 787 5020

1 905 846 4545

SALES@PEELLEDOR.COM

PEELLEDOR.COM

JULY 2020

Landing Door

WHAT GETS RETAINED

- ✓ Door Panels
- ✓ Door Rails

WHAT GETS REPLACED

- ✓ Power Door Operators / Manual Sheaves
- ✓ Chain & Connection Points
- ✓ Previous generation limit system (motorized door option)

NEW EQUIPMENT PROVIDED

- ✓ Power Door Operators
- ✓ Roller Chain & Connection Points
- ✓ Positional Encoder
- ✓ Unlocking Device
- ✓ Interlock
- ✓ Wireless Controller
- ✓ Safety Operation Labels

OPTIONAL EQUIPMENT

- ✓ Wiring Package



POWER DOOR OPERATORS

ROLLER CHAIN & CONNECTION POINTS (NOT SHOWN)

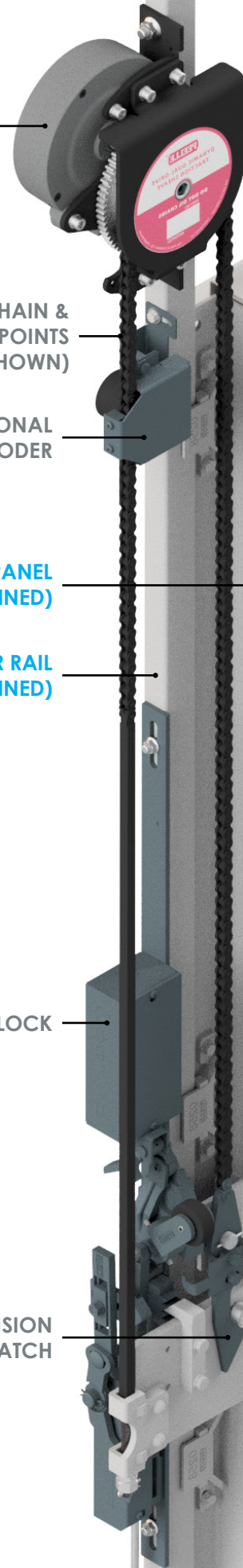
POSITIONAL ENCODER

DOOR PANEL (RETAINED)

DOOR RAIL (RETAINED)

INTERLOCK

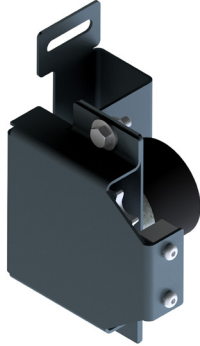
TENSION LATCH





POWER DOOR OPERATORS

2 power door operators required for each landing door



POSITIONAL ENCODER

1 encoder required for each landing door



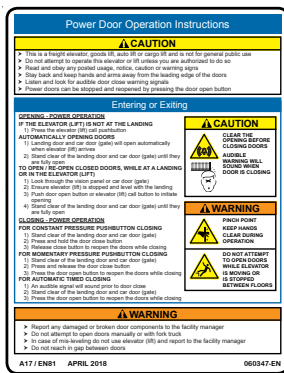
ROLLER CHAIN & CONNECTION POINTS (NOT SHOWN)

All landing door chain will be replaced



UNLOCKING DEVICE

1 typically located at the lowest landing. Devices are self closing and self locking.



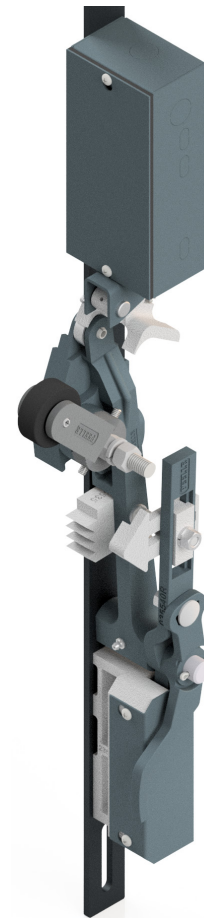
SAFETY OPERATION LABELS

Provided for each landing door, available in English, French, Spanish, German and Mandarin.



WIRELESS CAR DOOR CONTROLLER

1 controller required for each landing door



INTERLOCK

1 Interlock required for each landing door

Car Door

WHAT GETS RETAINED

- ✓ Door Panels
- ✓ Door Rails
- ✓ Counterweight
- ✓ Previous generation limit system (motorized door option)

WHAT GETS REPLACED

- ✓ Car Door Operators / Sprockets & Idlers
- ✓ Chain & Connection Points

NEW EQUIPMENT PROVIDED

- ✓ Car Door Operator & Idler
- ✓ Roller Chain & Connection Points
- ✓ Positional Encoder
- ✓ Car Door Contact
- ✓ Car Door Lock
- ✓ Retiring Cam
- ✓ Wireless Controller
- ✓ Light Curtain
- ✓ Safety Operation Labels

OPTIONAL EQUIPMENT

- ✓ Wiring Package

POWER DOOR OPERATORS

POSITIONAL ENCODER

CAR DOOR CONTACT

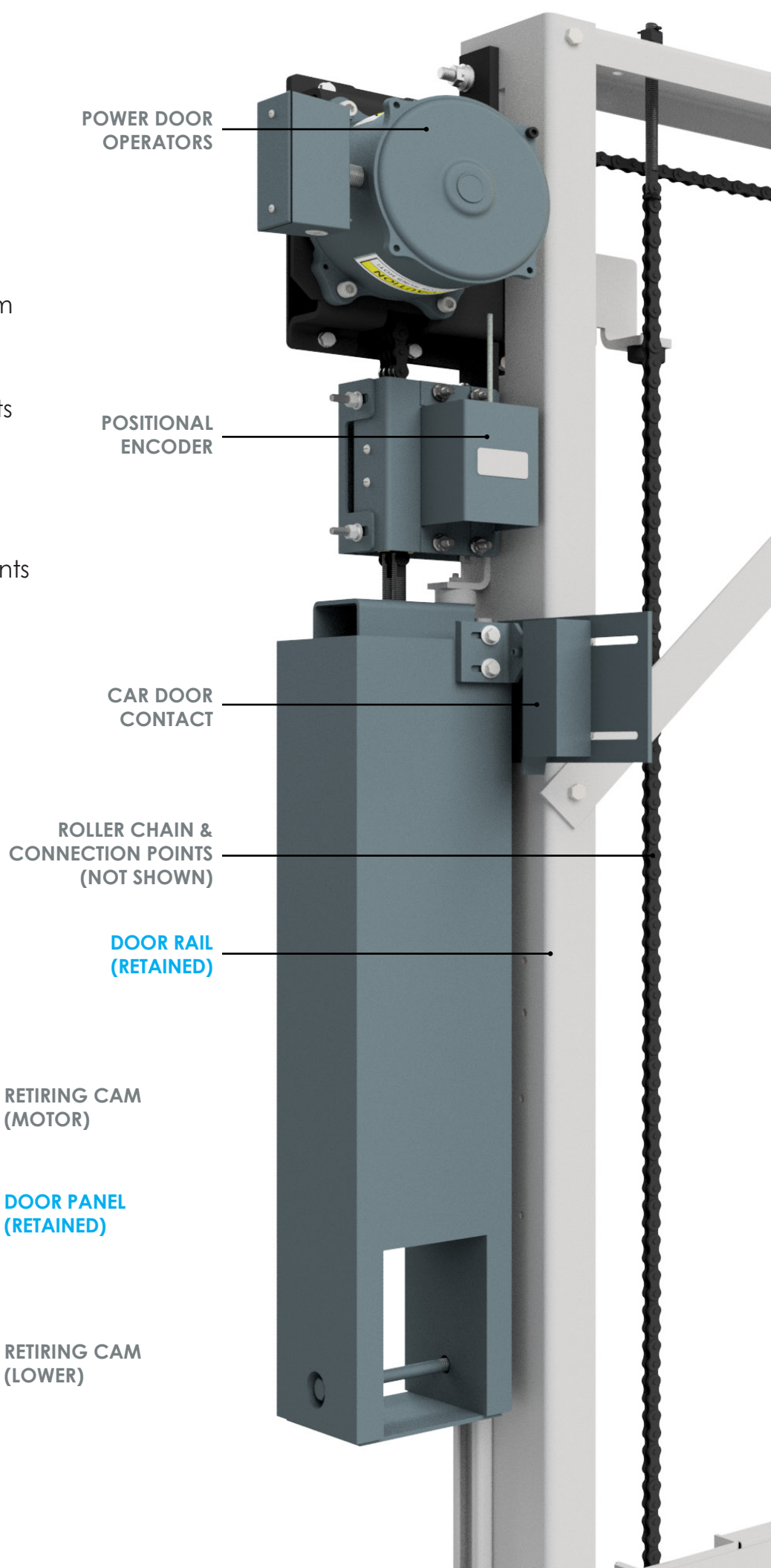
ROLLER CHAIN & CONNECTION POINTS (NOT SHOWN)

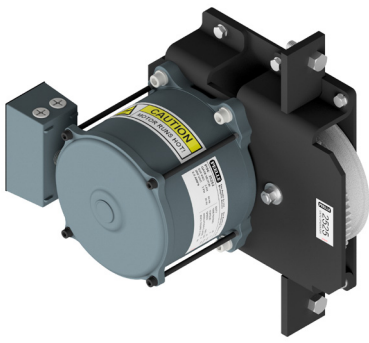
DOOR RAIL (RETAINED)

RETIRING CAM (MOTOR)

DOOR PANEL (RETAINED)

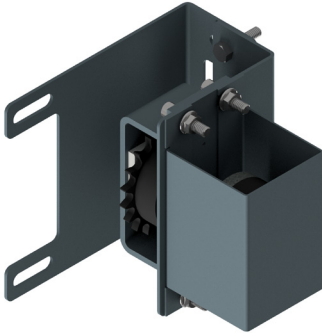
RETIRING CAM (LOWER)





POWER CAR DOOR OPERATOR

1 power car door operators required for each car door



POSITIONAL ENCODER

1 encoder required for each car door



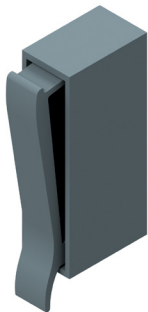
ROLLER CHAIN & CONNECTION POINTS (NOT SHOWN)

All car door chain will be replaced



LIGHT CURTAINS

1 Set provided for each car door entrance.



CAR DOOR CONTACT

1 required for each car door



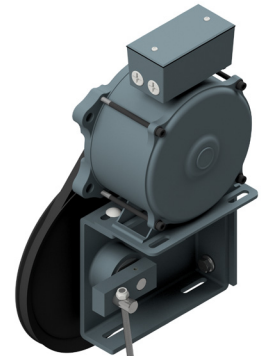
CAR DOOR LOCK

1 required for each car door



WIRELESS CAR DOOR CONTROLLER

1 controller required for each car door



RETIRING CAM ASSEMBLY

1 Retiring cam provided. Mounted to the car door rail, used for unlocking the landing door interlock.



SAFETY OPERATION LABELS

Provided for each car door, available in English, French, Spanish, German and Mandarin.

