

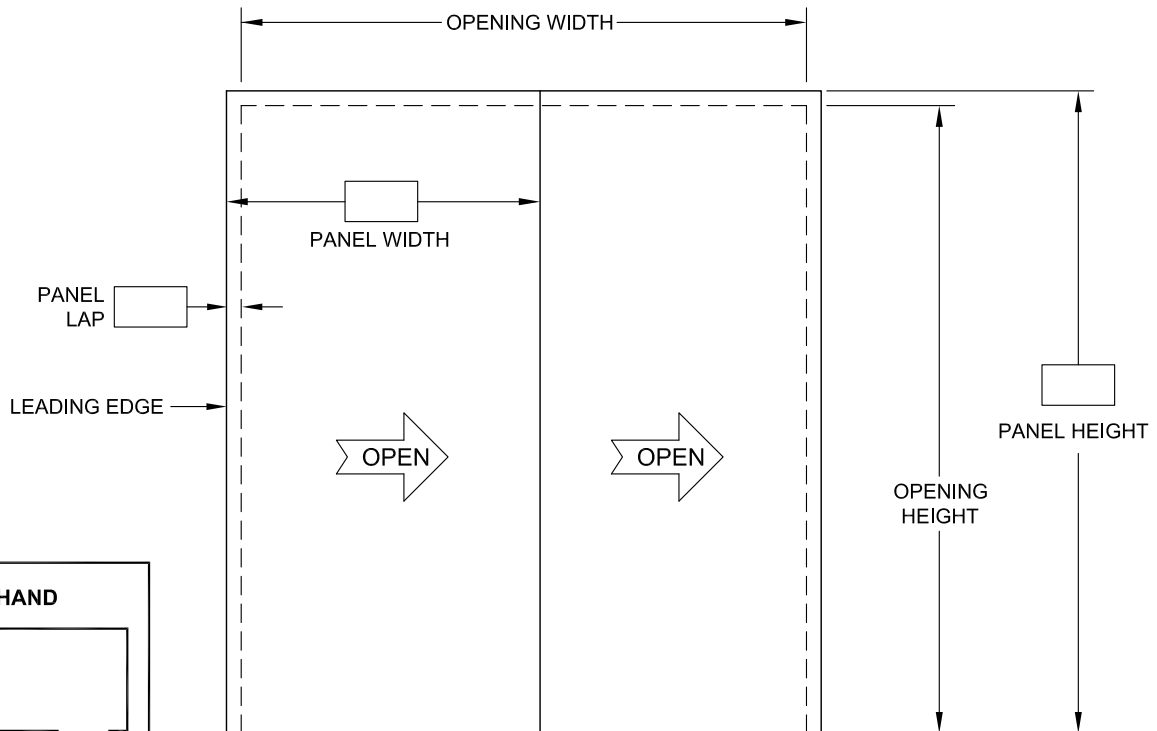
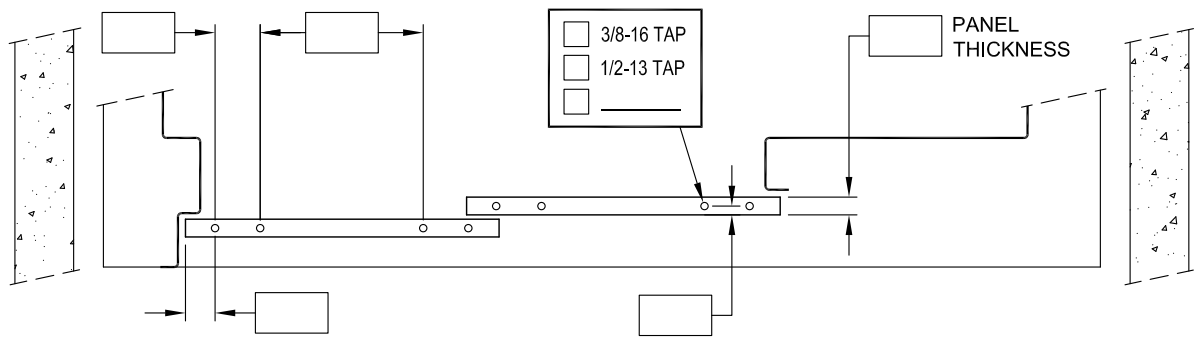
NO APPROVAL REQUIRED IF ALL BOXES ARE FILLED IN

Note: If additional drilling or reinforcement is required please mark on back of door (size & location)

ELEVATOR NO.
 OPENING WIDTH
 OPENING HEIGHT

BACK PANEL DRILLING

- ☐ **GAL** Open Height ≤ 120 ; Open Width ≤ 96 ; Leading Edge Overlap = 1.25; No MOnxt
- ☐ **OTIS** AT-400 & Glide P; Open Height ≤ 108
- ☐ **DOVER** Opening Width 30"-72"; Leading Edge Overlap=1.25"; Top Overlap greater than 1/2"
- ☐ **MAC** Opening Height 84"; Overlap = 3/4"
- ☐ **NONE**



SPECIFY HAND

(SHOWN) ☐ ☐

☐ LEFT ☐ RIGHT

VIEWED FROM
INSIDE HOISTWAY



Car Door Survey Sheet
TWO SPEED SIDE OPENING

DATE:
04/16/19

2SO