

# FREIGHT ELEVATOR / GOODS LIFT

## VERTICAL SLIDING DOORS



**THE PEELLE COMPANY**  
34 E. Main Street, #372, Smithtown, NY 11787

**THE PEELLE COMPANY LTD**  
195 Sandalwood Parkway West, Brampton, ON L7A 1J6

REPRESENTATIVES IN GERMANY, FRANCE, MIDDLE EAST, SINGAPORE & THE UK

1 800 787 5020  
1 905 846 4545  
[SALES@PEELLEDOR.COM](mailto:SALES@PEELLEDOR.COM)  
[PEELLEDOR.COM](http://PEELLEDOR.COM)

AUG 2019



# What is Freight / Goods?

Material transported by fork lift, hand truck, pallet jack, service cart, or vehicle.

There are many options to move freight/goods in a building.

## Material Lift

- Some are non-passenger and limited use passenger rated devices
- Narrow market
- Either standard pre-engineered package or application design
- Ideally suited for an integrated conveyor systems, inventory retrieval, and mezzanine storage

## Service Elevator

- Passenger elevator features
- Rugged interior for freight
- Pre-engineered
- Ideally suited for hotels, residences, office buildings, hospitals, etc. to transport lightweight materials, furniture, and low weight service carts

## Freight Elevator

- Heavy duty
- Rated for non-public use
- Application specific
- Designed based on the stakeholders operation
- Ideally suited for retail, grocery, factory, distribution and warehouse, garage, museum, government, convention center, power plant, and more.





# Freight Elevator/Goods Lift Door Features



## ROBUST CONSTRUCTION

Vertical sliding Peelle doors are designed specifically to the capacity and loading method of the elevator, and are heavy duty and reinforced to accommodate hand truck, pallet and forklift loading.

Horizontal sliding doors are designed primarily for light duty applications. This can result in damage due to incidental impact from loading misuse and abuse.



## TRUCKABLE SILLS

Vertical sliding Peelle door trucking sills are designed specifically to the capacity and loading method of the elevator, and are flat to allow smooth loading. Door guides are located in the hoistway, running vertically, so they are not damaged during loading, and debris cannot gather in the door guides.

Horizontal sliding door sills are subject to damage, premature wear and debris which affect door performance.



## INDEPENDENT LOCKS

Vertical sliding Peelle door interlocks are independent of the panels and located away from the opening, thereby protected on the door-guides.

Horizontal sliding doors, which sustain a high impact, may also suffer interlock misalignment, causing a shutdown.



## SPACE SAVINGS

Vertical sliding Peelle doors typically require 13in [330mm], of return space. This means more usable "building-space" for the owner.

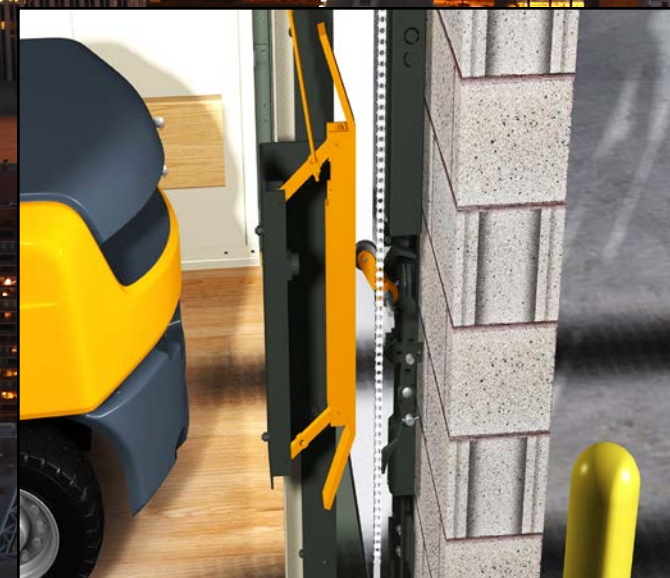
Horizontal doors require a large amount of "return-space" for the panels.



## SEQUENCE OPERATION

Vertical sliding Peelle doors permit loading only when the hoistway and car door entrance is fully open.

Horizontal doors are subject to incidental impact during loading, when the entrance is not fully opened, causing a shutdown.



## INDEPENDENT OPERATION

Vertically sliding Peelle doors have Independent Operation with no mechanical coupling between the Car door and Hoistway door allowing for heavy duty loading conditions.

Horizontal sliding doors have a mechanical coupling between the Car door and Hoistway door which can separate during heavy duty loading causing an elevator shutdown.



# Class of Loading



**Class A**  
**General Freight Loading**  
Where no item (including loaded truck) weighs more than 1/4 rated capacity



**Class C2**  
**Industrial Truck Loading**  
Where truck is not carried, but is used for loading and unloading



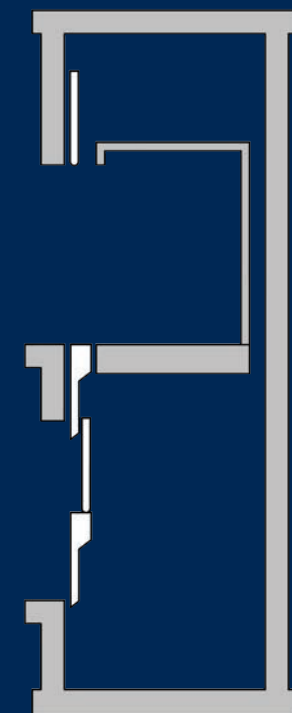
**Class B**  
**Motor Vehicle Loading**  
Automobiles, Trucks, Buses



**Class C3**  
**Concentrated Loading**  
No truck used, but load increments are more than 1/4 rated capacity. Carried load must not exceed rated capacity.



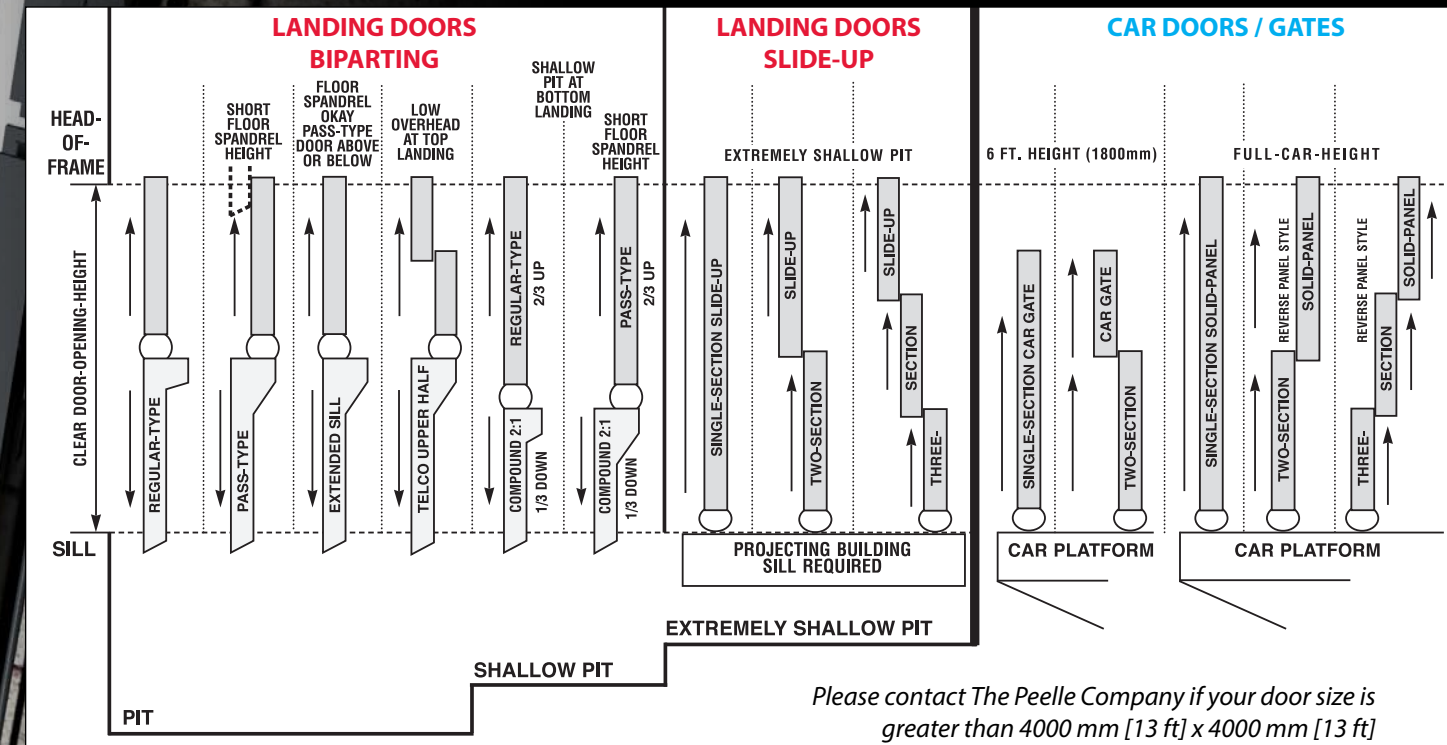
**Class C1**  
**Industrial Truck Loading**  
Where truck is carried



PASS TYPE DOORS

REFERENCE A17.1-2000 HANDBOOK

# Design Diversity



Please contact The Peelle Company if your door size is greater than 4000 mm [13 ft] x 4000 mm [13 ft]

## LANDING DOORS

### REGULAR TYPE

MIN. FLOOR TO FLOOR:  $1.5 \times \text{OPENING HT} + 150 \text{ mm}$  [6 in]  
MIN. PIT:  $0.5 \times \text{OPENING HT} + 102 \text{ mm}$  [4 in]  
RETURN SPACE: 330 mm [13 in] BOTH SIDES  
CAR CLEARANCE: 127 mm [5 in]

### PASS TYPE

WHEN FLOOR TO FLOOR IS LESS THAN  $1.5 \times \text{OPENING HT} + 150 \text{ mm}$  [6 in]  
MIN. FLOOR TO FLOOR:  $\text{OPENING HT} + 381 \text{ mm}$  [15 in]  
MIN. PIT:  $0.5 \times \text{OPENING HT} + 102 \text{ mm}$  [4 in]  
RETURN SPACE: 330 mm [13 in] BOTH SIDES  
CAR CLEARANCE: 171 mm [6 3/4 in]

### EXTENDED SILL

MIN. FLOOR TO FLOOR:  $1.5 \times \text{OPENING HT} + 150 \text{ mm}$  [6 in]  
MIN. PIT:  $0.5 \times \text{OPENING HT} + 102 \text{ mm}$  [4 in]  
RETURN SPACE: 330 mm [13 in] BOTH SIDES  
CAR CLEARANCE: 171 mm [6 3/4 in]

### TELCO UPPER HALF

MIN. FLOOR TO FLOOR:  $1.25 \times \text{OPENING HT} + 330 \text{ mm}$  [13 in]  
MIN. PIT:  $0.5 \times \text{OPENING HT} + 102 \text{ mm}$  [4 in]  
RETURN SPACE: 330 mm [13 in] BOTH SIDES  
CAR CLEARANCE: 171 mm [6 3/4 in]

### COMPOUND 2:1

MIN. FLOOR TO FLOOR:  $1.66 \times \text{OPENING HT} + 150 \text{ mm}$  [6 in]  
MIN. PIT:  $0.33 \times \text{OPENING HT} + 102 \text{ mm}$  [4 in]  
RETURN SPACE: 330 mm [13 in] BOTH SIDES  
CAR CLEARANCE: 127 mm [5 in]  
MAX CAR LAP: 50 mm [2 in], BEFORE NOTCHING PLATFORM

### COMPOUND 2:1 - PASS TYPE

MIN. FLOOR TO FLOOR:  $1.67 \times \text{OPENING HT} + 406 \text{ mm}$  [16 in]  
MIN. PIT:  $0.33 \times \text{OPENING HT} + 102 \text{ mm}$  [4 in]  
RETURN SPACE: 330 mm [13 in] BOTH SIDES  
CAR CLEARANCE: 170 mm [6 3/4 in]  
MAX CAR LAP: 50 mm [2 in], BEFORE NOTCHING PLATFORM

### SINGLE SECTION SLIDE-UP

MIN. FLOOR TO FLOOR:  $2 \times \text{OPENING HT} + 143 \text{ mm}$  [5 5/8 in]  
RETURN SPACE: 457 mm [18 in] BOTH SIDES  
CAR CLEARANCE: 171 mm [6 3/4 in]

### TWO SECTION SLIDE-UP

MIN. FLOOR TO FLOOR:  $1.5 \times \text{OPENING HT} + 279 \text{ mm}$  [11 in]  
RETURN SPACE: 460 mm [18 in] BOTH SIDES  
CAR CLEARANCE: 191 mm [7 1/2 in]

### THREE SECTION SLIDE-UP

MIN. FLOOR TO FLOOR:  $1.33 \times \text{OPENING HT} + 279 \text{ mm}$  [11 in]  
RETURN SPACE: 460 mm [18 in] BOTH SIDES  
CAR CLEARANCE: 241 mm [9 1/2 in]

## CAR DOORS / GATES

### SINGLE SECTION CAR GATE (MESH PANEL A17)

MIN. RAIL HEIGHT:  $\text{OPENING HT} + 1829 \text{ mm}$  [72 in]  
CAR ENCLOSURE SETBACK: 114 mm [4 1/2 in]

### TWO SECTION CAR GATE (MESH PANEL A17)

MIN. RAIL HEIGHT:  $1.5 \times \text{OPENING HT} + 152 \text{ mm}$  [6 in]  
CAR ENCLOSURE SETBACK: 165 mm [6 1/2 in]

### SINGLE SECTION SOLID PANEL (EN81)

MIN. RAIL HEIGHT:  $2 \times \text{OPENING HT} + 356 \text{ mm}$  [14 in]  
CAR ENCLOSURE SET BACK: 165 mm [6 1/2 in]

### TWO SECTION SOLID PANEL (EN81)

MIN. RAIL HEIGHT:  $1.5 \times \text{OPENING HT} + 330 \text{ mm}$  [13 in]  
CAR ENCLOSURE SET BACK: 191 mm [7 1/2 in]

### THREE SECTION SOLID PANEL (EN81)

MIN. RAIL HEIGHT:  $1.33 \times \text{OPENING HT} + 330 \text{ mm}$  [13 in]  
CAR ENCLOSURE SET BACK: 229 mm [9 in]



# Price Request Form

## CUSTOMER DATA

Company \_\_\_\_\_  
 Address \_\_\_\_\_  
 Contact Person \_\_\_\_\_  
 Phone \_\_\_\_\_  
 Fax \_\_\_\_\_

## GENERAL INFORMATION

Quantity of Elevators \_\_\_\_\_  
 Number of Stops \_\_\_\_\_  
 Door Quantity Front \_\_\_\_\_ Rear \_\_\_\_\_  
 Opening Width \_\_\_\_\_  
 Opening Height \_\_\_\_\_  
 Car Capacity (kg, lbs) \_\_\_\_\_  
 Pit Depth \_\_\_\_\_  
 Overhead \_\_\_\_\_

## DOOR OPERATION

☐ Manual  
☐ Power  
 Power Supply \_\_\_\_\_ V \_\_\_\_\_ Hz  
 (Must be 3-phase)

## LANDING DOOR DATA

### Door Type

☐ Biparting  
☐ Slide-Up

### Options

☐ Auto Close System  
☐ Electrical Material Package  
 (Wires & Junction Boxes)

## CAR DOOR / GATE DATA

### Type of Car Gate

☐ Wire Mesh  
☐ Solid Panel

## FINISH

☐ Standard Powder Coat  
☐ Stainless Steel Cladding  
☐ Complete Stainless Steel  
 (for special environment)

## JOB SITE DATA

Job Name \_\_\_\_\_  
 Job Location \_\_\_\_\_  
 Elevator No \_\_\_\_\_  
 Estimated Ship Date \_\_\_\_\_

## APPLICABLE CODE

☐ EN81  
☐ ASME A17  
☐ OTHER \_\_\_\_\_

## INSTALLATION

☐ New Installation  
☐ Existing (replacement)

## SHAFT / HOISTWAY CONDITIONS

☐ NEMA 1/IP20 Normal  
☐ NEMA 4/IP54, IP56 Moisture  
☐ NEMA 4X/IP56 Corrosion  
☐ NEMA 7/9 Explosion  
 Class \_\_\_\_\_ Div. \_\_\_\_\_ Group \_\_\_\_\_

## CONTROL ROOM CONDITIONS

☐ NEMA 1/IP20 Normal  
☐ NEMA 4/IP54, IP56 Moisture  
☐ NEMA 4X/IP56 Corrosion  
☐ NEMA 7/9 Explosion  
 Class \_\_\_\_\_ Div. \_\_\_\_\_ Group \_\_\_\_\_

## ENTRANCE FRAMES

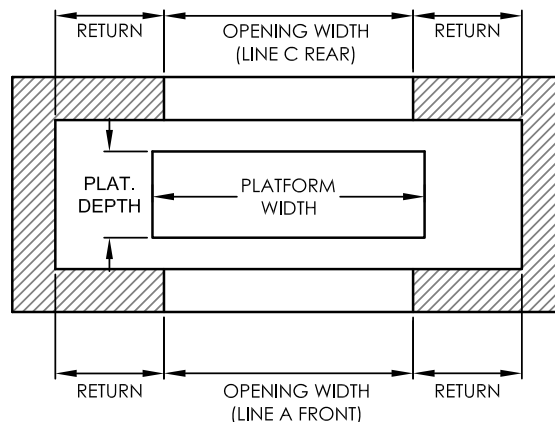
☐ YES Wall Thickness \_\_\_\_\_  
☐ NO

## CAR ENCLOSURE

Platform Width \_\_\_\_\_  
 Platform Depth \_\_\_\_\_

## WIRING PACKAGE

☐ Wiring Material Package



## Elevator and Shaft Data

Fill in dimensions

