

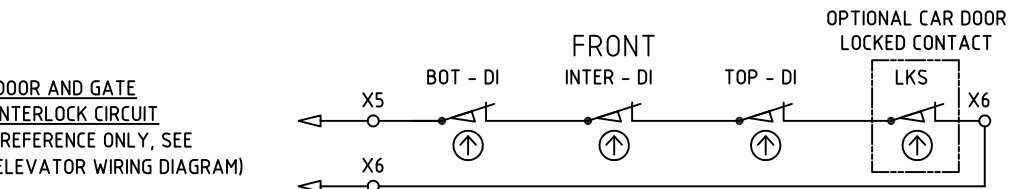
FUSED DISCONNECT SWITCH
BY GENERAL CONTRACTOR
30A OR SMALLEST POSSIBLE
400V, 480V OR 600V AC 3PH
FOR DOOR POWER TERMINATION.

BATTERY BACKUP
FOR UPS BATTERY BACKUP WIRING REFER TO
ELEVATOR CONTROL PRINTS

SPRINKLER ACTIVATION
WHERE PROVIDED WITH AUTOMATIC DISCONNECT
MEANS SHALL ALSO DISCONNECT THE DOOR POWER.

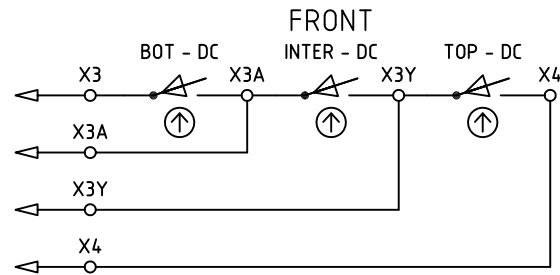
WIRE SIZE
USE #14AWG [2MM] COPPER WIRE ON 10A BRANCH
CIRCUITS TO CONTROLLERS. IF NECESSARY
"DOUBLE-UP" #18 AWG [1MM] WIRE.

DOOR CONTROL POWER CIRCUIT

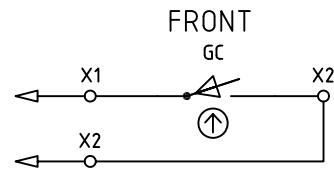


DOOR AND GATE INTERLOCK CIRCUIT
(REFERENCE ONLY, SEE
ELEVATOR WIRING DIAGRAM)

INTERLOCK CIRCUIT REQUIRES
BOTH DOOR/GATE CLOSED AND
DOOR LOCKED STRING TO BE
COMPLETE BEFORE ELEVATOR
CAN MOVE.



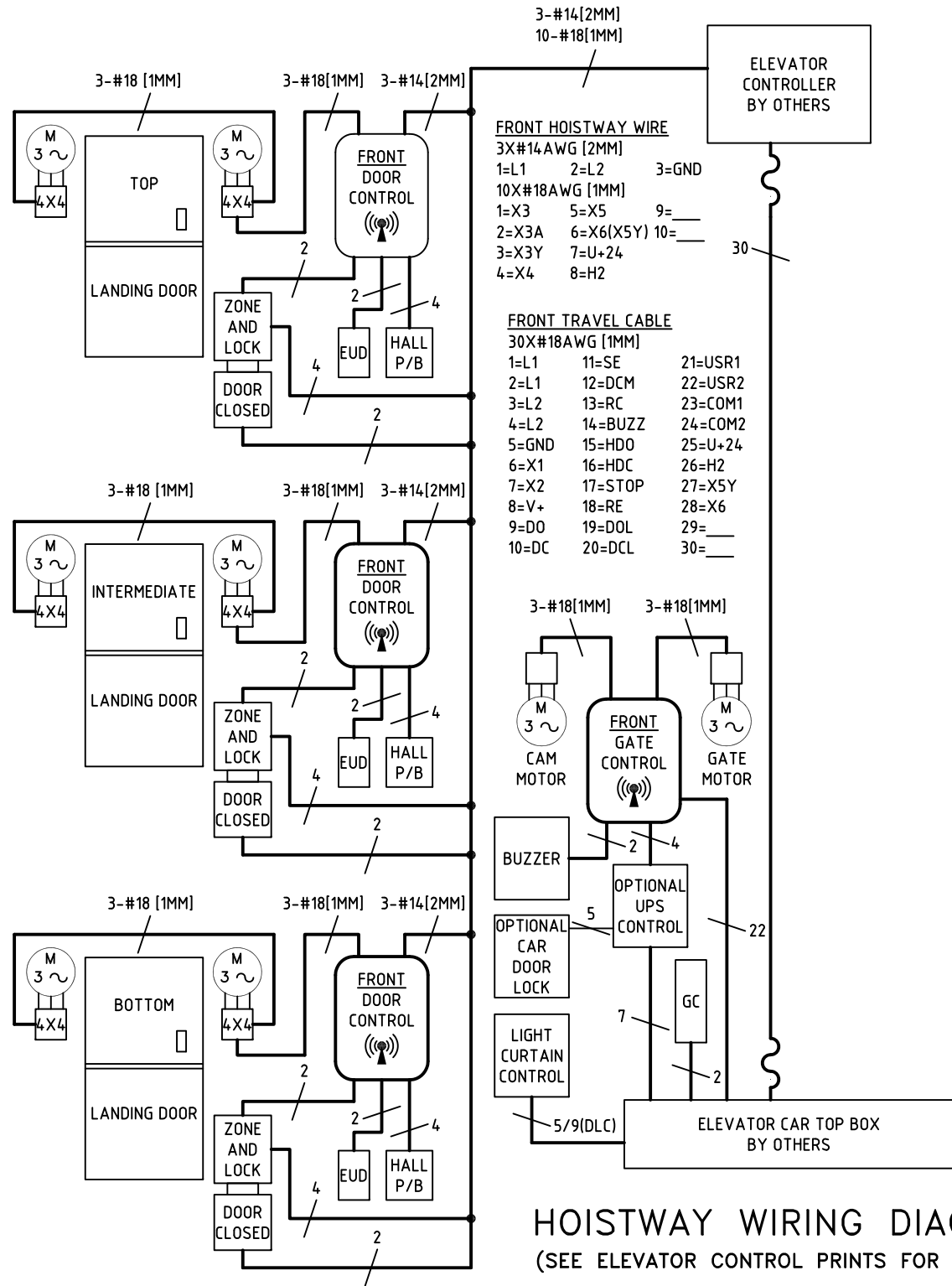
DI IS MADE WHEN ALL
DOORS ARE LOCKED.
LKS (WHERE PROVIDED) IS
MADE WHEN GATES ARE
LOCKED.
DC IS MADE WHEN ALL
DOORS ARE CLOSED.
GC IS MADE WHEN GATES
ARE CLOSED.



NOTE:
FOR REDUNDANT MONITORING
SEE SIGNAL DCF.

INTERLOCK SAFETY CIRCUIT FOR REFERENCE ONLY!

(SEE ELEVATOR CONTROL PRINTS FOR DETAILS)



HOISTWAY WIRING DIAGRAM (SEE ELEVATOR CONTROL PRINTS FOR DETAILS)

ROUTING		JOB INFORMATION		FINISH		
QTY	DEPARTMENT	JOB NO.	2013-	REV		
	MANUFACTURED PARTS	JOB NAME	-			
	SPECIAL PARTS	ELEV. NO.	-	SCALE		
	DOORS / GATES / CABS	LOCATION	-			
	RAILS	CUSTOMER	-	SHT		
	ELECTRICAL	CUST PO NO.	-			
	STOCKROOM	CUST JOB NO.	-	DRAWING		
	FINAL ASSEMBLY					
	SHIPPING			1 OF 3		
1	SHOP FIELD FOLDER					
1	CUSTOMER F&D					

Freight Elevator Doors Since 1905
PEELLE
We still service equipment we built 50 years ago

TITLE
WIRING DIAGRAM
POWER AND INTERLOCK CIRCUIT
HOISTWAY WIRING DIAGRAM

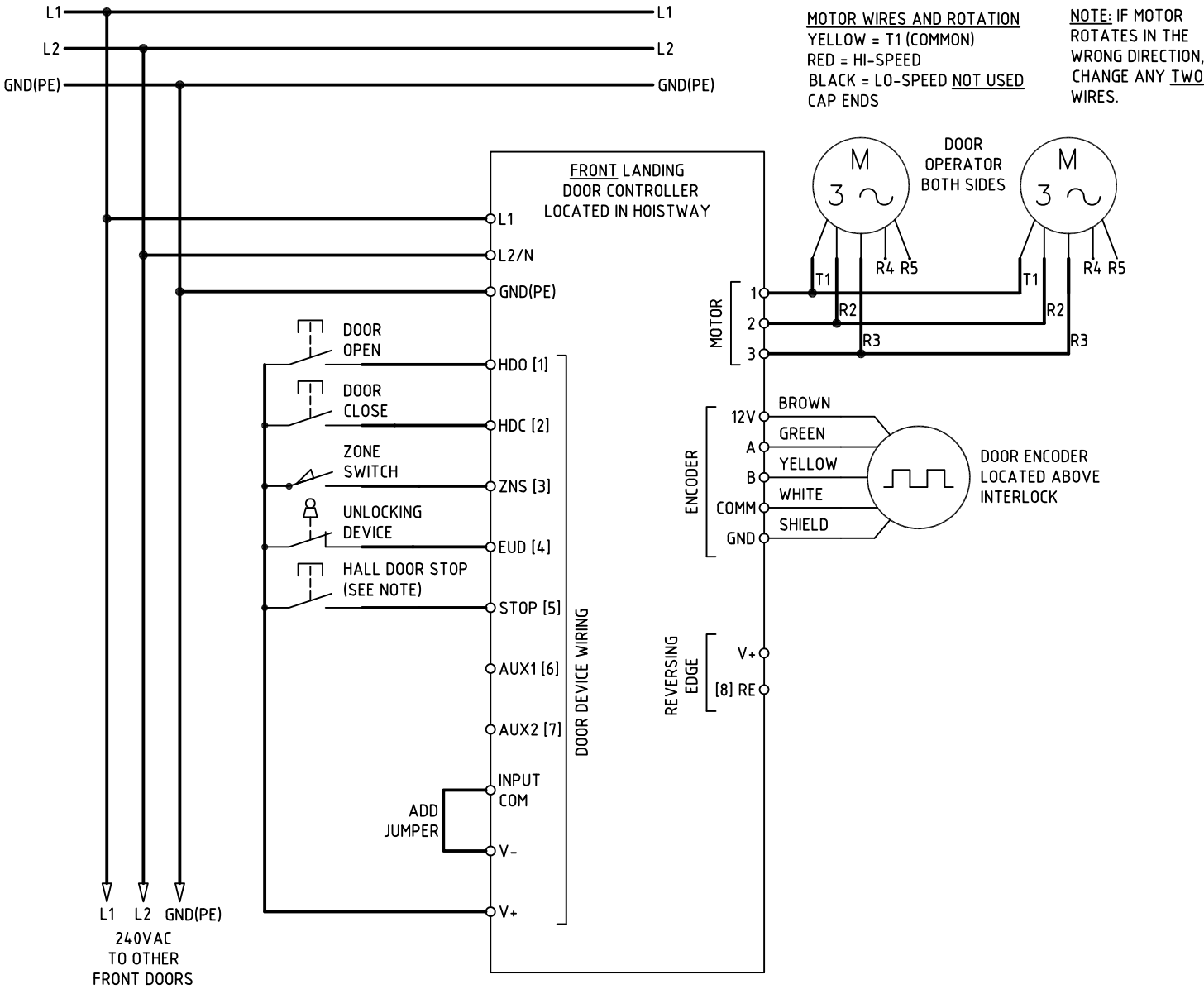
DATE
DRAWN BY

DRAWING

HOISTWAY WIRES
DIAGRAM SHOWS 3 FRONT LANDING DOORS. WIRING IS
TYPICAL FOR ADDITIONAL DOORS IN LINE.

SOME WIRES NOT SHOWN
LIGHT CURTAIN EDGES AND DOOR/GATE ENCODERS
HAVE PRE-ATTACHED CABLES.

NO	DATE	REVISION	BY



FRONT LANDING DOOR CONTROLLER WIRING
ALL FLOORS WIRED SIMILAR
(1 FLOOR SHOWN)

DOOR OPEN AND DOOR CLOSE PUSHBUTTONS (HALL)
HALL OPEN AND CLOSE PUSHBUTTON INPUTS ARE TRANSMITTED TO THE CAR GATE CONTROLLER WHEN THE LANDING DOOR CONTROLLER IS ZONED. THE BUTTONS DO NOT DIRECTLY CONTROL DOOR OPERATION. THE CAR GATE CONTROLLER SIGNALS THE ELEVATOR CONTROLLER THROUGH THE HALL OPEN AND HALL CLOSE OUTPUT RELAYS.

ZONE SWITCH (LOCATED IN INTERLOCK)
AUTOMATIC DOOR OPERATION AT A LANDING REQUIRES FLOOR ZONE ZNS INPUT TO BE ON (HIGH) TO ENERGIZE FLOOR MOTORS AND INITIATE CONTROLLER.

EMERGENCY UNLOCKING DEVICE
WIRE UNLOCKING DEVICE SWITCH TO LANDING DOOR CONTROLLER SO THAT THEY ARE CLOSED (HIGH) WHEN RESET. OPENING THE EMERGENCY UNLOCKING DEVICE WILL TURN EUD INDICATOR ON. PULL CHAIN TO UNLOCK DOOR. RESET SWITCH TO RETURN TO OPERATION (EUD INPUT WILL DISPLAY OFF).

HALL DOOR STOP BUTTON (WHERE PROVIDED)
HALL DOOR STOP PUSHBUTTON (N.O. OR N.C.) INPUT IS TRANSMITTED TO THE CAR GATE CONTROLLER WHEN THE LANDING DOOR CONTROLLER IS ZONED. THE BUTTON WILL STOP THE DOORS AND THE CAR GATE CONTROLLER SIGNALS THE ELEVATOR CONTROLLER THROUGH DOOR STOP OUTPUT RELAY. SET PARAMETER 96 TO 00 FOR N.O. BUTTON OR 01 FOR N.C. BUTTON.

LIGHT CURTAIN (WHERE PROVIDED)
LANDING DOOR LIGHT CURTAIN SIGNAL IS TRANSMITTED TO THE CAR GATE CONTROLLER THROUGH RE INPUT WHEN THE LANDING DOOR CONTROLLER IS ZONED. LIGHT CURTAINS DO NOT DIRECTLY CONTROL DOOR OPERATION. THE CAR GATE CONTROLLER SIGNALS THE ELEVATOR CONTROLLER THROUGH THE REVERSING EDGE OUTPUT RELAY.
INPUT COM
ADD JUMPER FROM V- TO INPUT COM. WIRE ALL LANDING DEVICE SWITCH FROM V+ TO THE INPUT.

INDEPENDENT DOOR OPERATION
USE INDEPENDENT TO LEARN THE DOORS AND SET PARAMETER. SET AUTO/IND SWITCH TO IND. DOORS WILL OPERATE IN INDEPENDENT MODE USING THE OPEN AND CLOSE BUTTONS BELOW THE LCD SCREEN.

AUTOMATIC DOOR OPERATION
AFTER LEARN, SET AUTO/IND SWITCH TO AUTO. IN AUTOMATIC MODE, DOORS WILL ONLY OPEN AND CLOSE ACCORDING THE DO AND DC INPUTS FROM THE CAR GATE CONTROLLER ONLY IF:
-EMERGENCY UNLOCKING DEVICES (EUD) FROM EACH FLOOR MUST ARE RESET. "EUD" WILL BE ON SOLID AT THE FLOOR WHERE EUD IS SET AND FLASH ON ALL OTHER CONTROLLERS.
-THE ZONE (ZNS) INPUT IS ACTIVE (HIGH). "ZONE" WILL BE SHOWN ON LANDING AND CAR GATE CONTROLLER.
-MULTIPLE ZONE INPUTS (FROM OTHER FLOORS) WILL DEACTIVE ALL DOORS. "MULTI ZONE" WILL BE SHOWN ON CAR GATE CONTROLLER.
-HALL DOOR STOP BUTTON WILL DEACTIVE DOORS.

ROUTING		JOB INFORMATION		FINISH		
QTY	DEPARTMENT	JOB NO.	2013-	<div>Freight Elevator Doors Since 1905® PEELLE We still service equipment we built 50 years ago</div>		
	MANUFACTURED PARTS	JOB NAME	-			
	SPECIAL PARTS	ELEV. NO.	-	TITLE	REV	SCALE
	DOORS / GATES / CABS	LOCATION	-	LANDING DOOR WIRING FRONT AND REAR OPENINGS		
	RAILS	CUSTOMER	-			
	ELECTRICAL	CUST PO NO.	-	DATE		
	STOCKROOM	CUST JOB NO.	-	DRAWN BY		
	FINAL ASSEMBLY					
	SHIPPING					
1	SHOP FIELD FOLDER					
1	CUSTOMER F&D					

NO	DATE	REVISION	BY

FRONT CONTROL INTERFACE
INPUTS AND OUTPUTS OF THE CAR GATE CONTROLLER ARE THE ONLY INTERFACE TO THE ELEVATOR CONTROL FOR DOOR OPERATION.
NOTE: FRONT AND REAR INPUTS ARE COMPLETELY SEPARATE.

INPUT COM
ADD JUMPER TO THE **INPUT COM** FROM **V-** WHEN CAR GATE CONTROLLER **V+** IS USED FOR THE INPUT VOLTAGE.
NOTE: WHERE ELEVATOR CONTROL VOLTAGE IS USED, CONNECT INPUT COM TO ELEVATOR CONTROLLER ACCORDING TO ELEVATOR CONTROL PRINTS. DO NOT USE V+ OR V-.

DO - DOOR OPEN - INPUT [1]
CONSTANT SIGNAL REQUIRED TO OPEN DOORS

DC - DOOR CLOSE - INPUT [2]
CONSTANT SIGNAL REQUIRED TO CLOSE DOORS

SE - NUDGING - INPUT [3]
CONSTANT SIGNAL REQUIRED WITH DOOR CLOSE FOR GATE SLOW SPEED CLOSING IN FIRE SERVICE PHASE 1 RECALL.

DCM - FAST CLOSING - INPUT [4]
CONSTANT SIGNAL REQUIRED WITH DOOR CLOSE FOR GATE SLOW SPEED CLOSING IN FIRE SERVICE PHASE 1 RECALL.

RC - RETIRING CAM - INPUT [5]
INPUT REQUIRED TO LIFT CAM AND MOVE CAR. SIGNAL SHOULD BE LOW WHENEVER CAR IS STOPPED.

BUZZ - CLOSE WARNING BUZZER - INPUT [6]
INPUT REQUIRED 5 SECONDS BEFORE AUTOMATIC DOOR CLOSE AND UNTIL DOORS ARE FULLY CLOSED.

AUX2 - INPUT [7] - NOT USED

HALL OPEN - OUTPUT RELAY
CONTACT CLOSSES WHEN ZONED HALL DOOR OPEN BUTTON IS PRESSED.

HALL CLOSE - OUPUT RELAY
CONTACT CLOSSES WHEN ZONED HALL DOOR CLOSE BUTTON IS PRESSED.

DOOR STOP - OUTPUT RELAY
NORMALLY OPEN CONTACT CLOSSES AND NORMALLY CLOSED CONTACT OPENS WHEN ZONED HALL DOOR STOP BUTTON IS PRESSED OR DOORS ARE STUCK.
NOTE: SEE SHEET 2 FOR HALL STOP BUTTON WIRING.

REVERSING EDGE - INPUT [8] - OUTPUT RELAY
INPUT - NORMALLY OPEN CONTACT.
OUTPUT - NORMALLY OPEN CONTACT CLOSSES AND NORMALLY CLOSED CONTACT OPENS WHEN EDGE IS ACTIVATED.

DOOR OPEN - OUTPUT RELAY
NORMALLY OPEN CONTACT CLOSSES AND NORMALLY CLOSED CONTACT OPENS WHEN DOOR AND GATE ARE OPEN.

DOOR CLOSED - OUTPUT RELAY
NORMALLY OPEN CONTACT CLOSSES AND NORMALLY CLOSED CONTACT OPENS WHEN ALL DOORS AND GATE ARE CLOSED.
NOTE: SEE PARAMETER 97 FOR POWER-UP MODE.

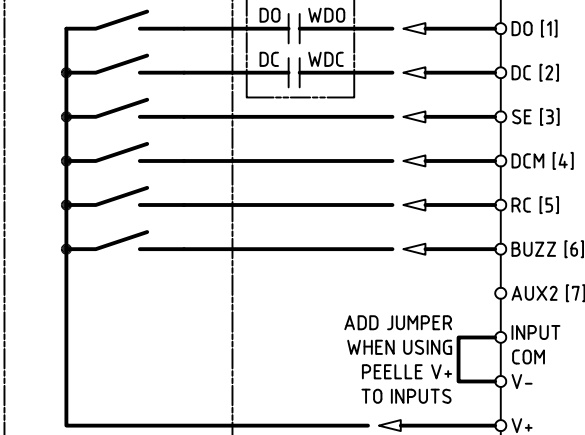
ELEVATOR CONTROLLER
LOCATED IN MACHINE ROOM OR ON CAR TOP

FRONT CAR GATE CONTROLLER
LOCATED ON CAR

OPTIONAL UPS CONTROL
DO WDO
DC WDC

MOTOR WIRES AND ROTATION
YELLOW = T1 (COMMON)
RED = HI-SPEED
BLACK = LO-SPEED **NOT USED** CAP ENDS

NOTE: IF MOTOR ROTATES IN THE WRONG DIRECTION, CHANGE ANY TWO WIRES.



ADD JUMPER WHEN USING PEELE V+ TO INPUTS

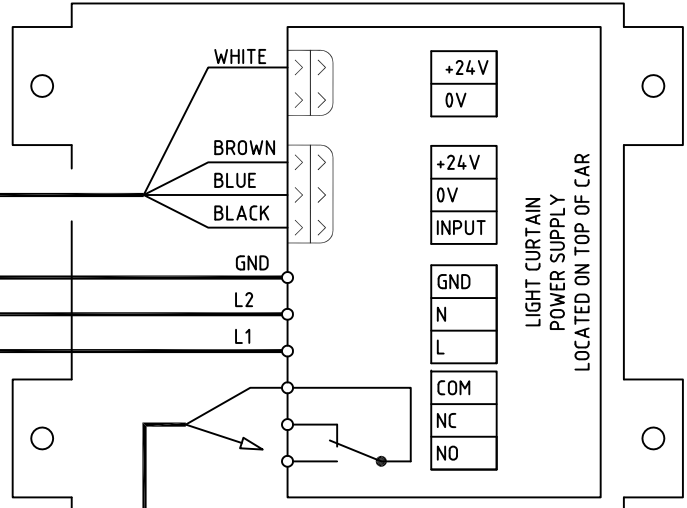
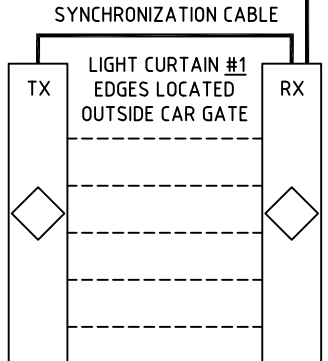
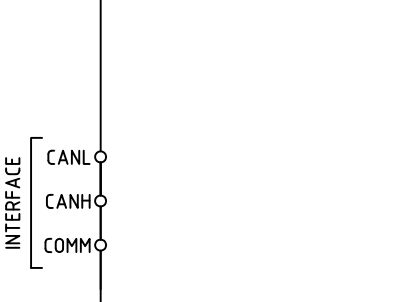
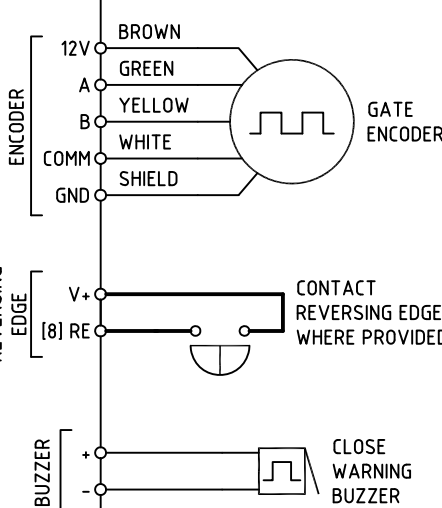
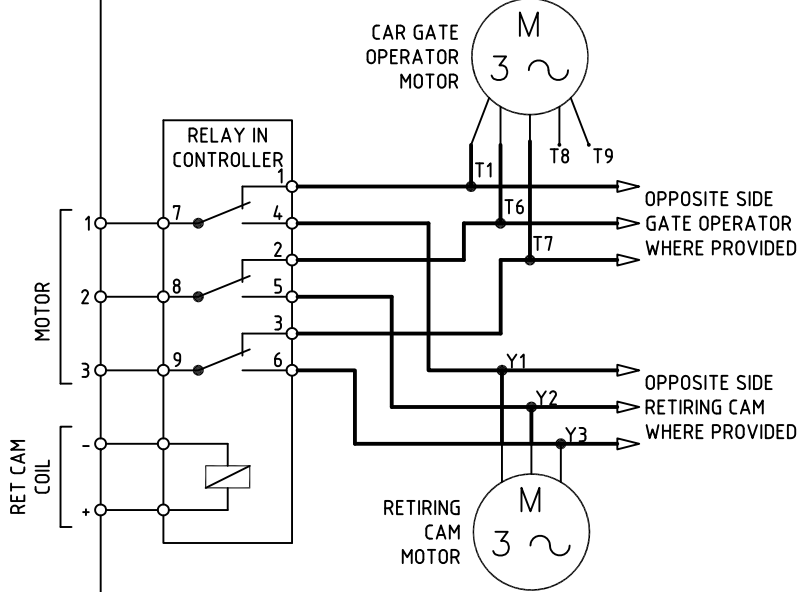
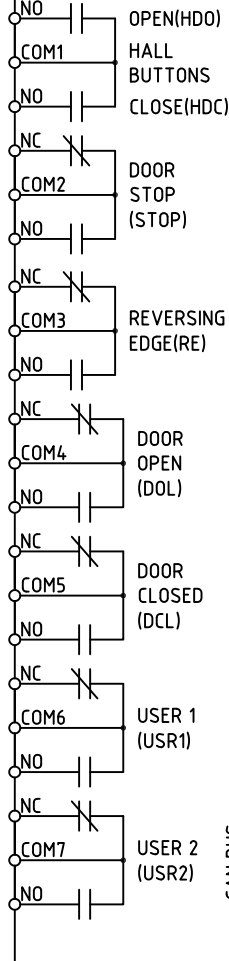
USER 1 - OUTPUT RELAY
NORMALLY OPEN CONTACT CLOSSES AND NORMALLY CLOSED CONTACT OPENS WHEN BOTH DOOR AND GATE ARE 3/4 OPEN.
NOTE: SEE MANUAL 224 FOR OTHER OPTIONS.

USER 2 - OUTPUT RELAY
NORMALLY OPEN CONTACT CLOSSES AND NORMALLY CLOSED CONTACT OPENS WHEN BOTH DOOR AND GATE ARE 3/4 CLOSED.

CAN BUS INTERFACE
SEE ELEVATOR CONTROL PRINTS.

INDEPENDENT DOOR OPERATION
USE INDEPENDENT TO LEARN THE GATE AND SET PARAMETERS. SET **AUTO/IND** SWITCH TO **IND**. GATE WILL OPERATE USING THE OPEN, CLOSE AND RETCAM BUTTONS BELOW THE LCD SCREEN.

AUTOMATIC DOOR OPERATION
AFTER LEARN, SET **AUTO/IND** SWITCH TO **AUTO**. IN AUTOMATIC MODE, GATE WILL ONLY OPEN AND CLOSE ACCORDING THE **DO** AND **DC** INPUTS ONLY IF:
-EMERGENCY UNLOCKING DEVICES (EUD) FROM EACH FLOOR IS **RESET**. "EUD" WILL BE ON SOLID AT THE FLOOR WHERE EUD IS SET AND FLASH ON ALL OTHER CONTROLLERS.
-STOP INPUT IS NOT ACTIVE.
-A ZONE (ZNS) INPUT IS ACTIVE (HIGH). "ZONE" WILL BE SHOWN ON LANDING AND CAR GATE CONTROLLER.
-MULTIPLE ZONE INPUTS (FROM OTHER FLOORS) WILL DEACTIVE ALL DOORS. "MULTI ZONE" WILL BE SHOWN ON CAR GATE CONTROLLER.

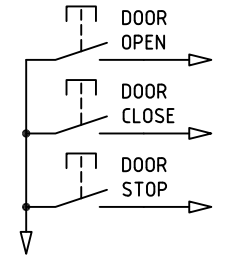


NOTE: FOR NO OR NC CONNECTION SEE ELEVATOR CONTROL PRINTS

LIGHT CURTAINS
FOR LIGHT CURTAIN SIGNAL WIRING SEE ELEVATOR CONTROL PRINTS. SIGNALS TO AND FROM THE LIGHT CURTAINS ARE CONTROLLED BY THE ELEVATOR CONTROL.

C.O.P. DOOR OPERATION BUTTONS
CAR OPEN, CLOSE AND STOP BUTTONS ARE WIRED ACCORDING TO THE ELEVATOR CONTROL PRINTS.

GATE CONTACT
SEE SHEET 1 FOR GATE CLOSED CONTACT WIRING.



FRONT CAR GATE CONTROLLER AND LIGHT CURTAIN WIRING

ROUTING		JOB INFORMATION		FINISH	
QTY	DEPARTMENT	JOB NO.	2013-	REV	SCALE
	MANUFACTURED PARTS	JOB NAME	-		
	SPECIAL PARTS	ELEV. NO.	-		
	DOORS / GATES / CABS	LOCATION	-		
	RAILS	CUSTOMER	-		
	ELECTRICAL	CUST PO NO.	-		
	STOCKROOM	CUST JOB NO.	-		
	FINAL ASSEMBLY				
	SHIPPING				
1	SHOP FIELD FOLDER				
1	CUSTOMER F&D				

Freight Elevator Doors Since 1905® PEELLE We still service equipment we built 50 years ago		TITLE CAR GATE WIRING FRONT OPENING		DRAWING	
DATE		DRAWN BY			

3 OF 3	
--------	--