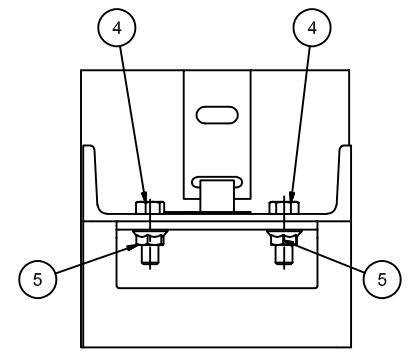
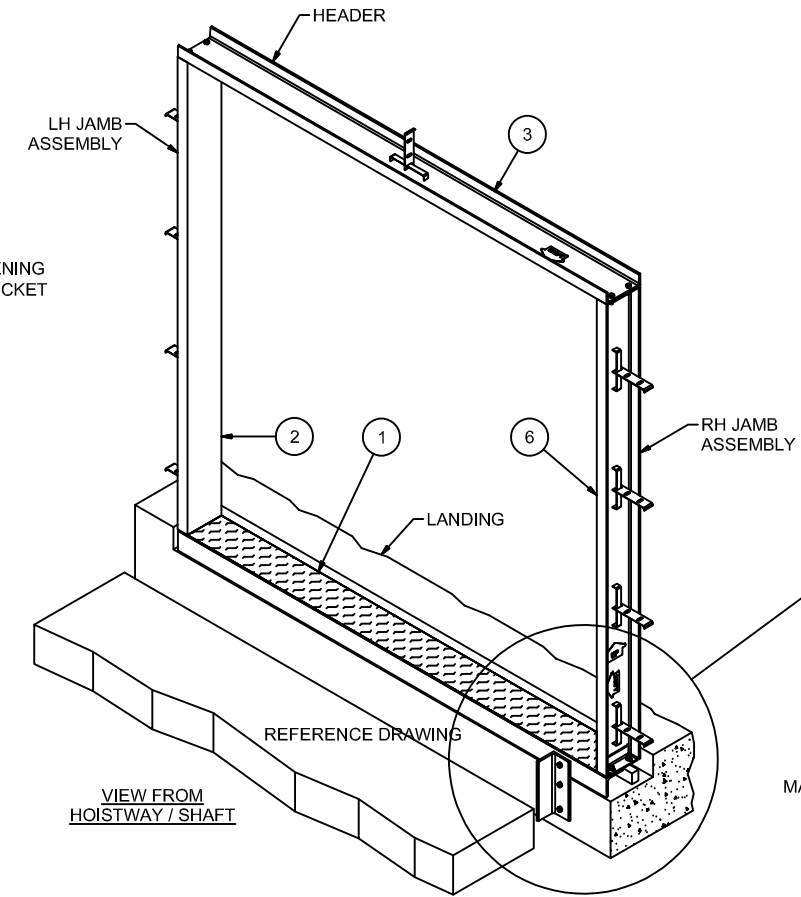


FRAME ELEVATION
VIEW FROM HOISTWAY / SHAFT
TYP EACH LANDING

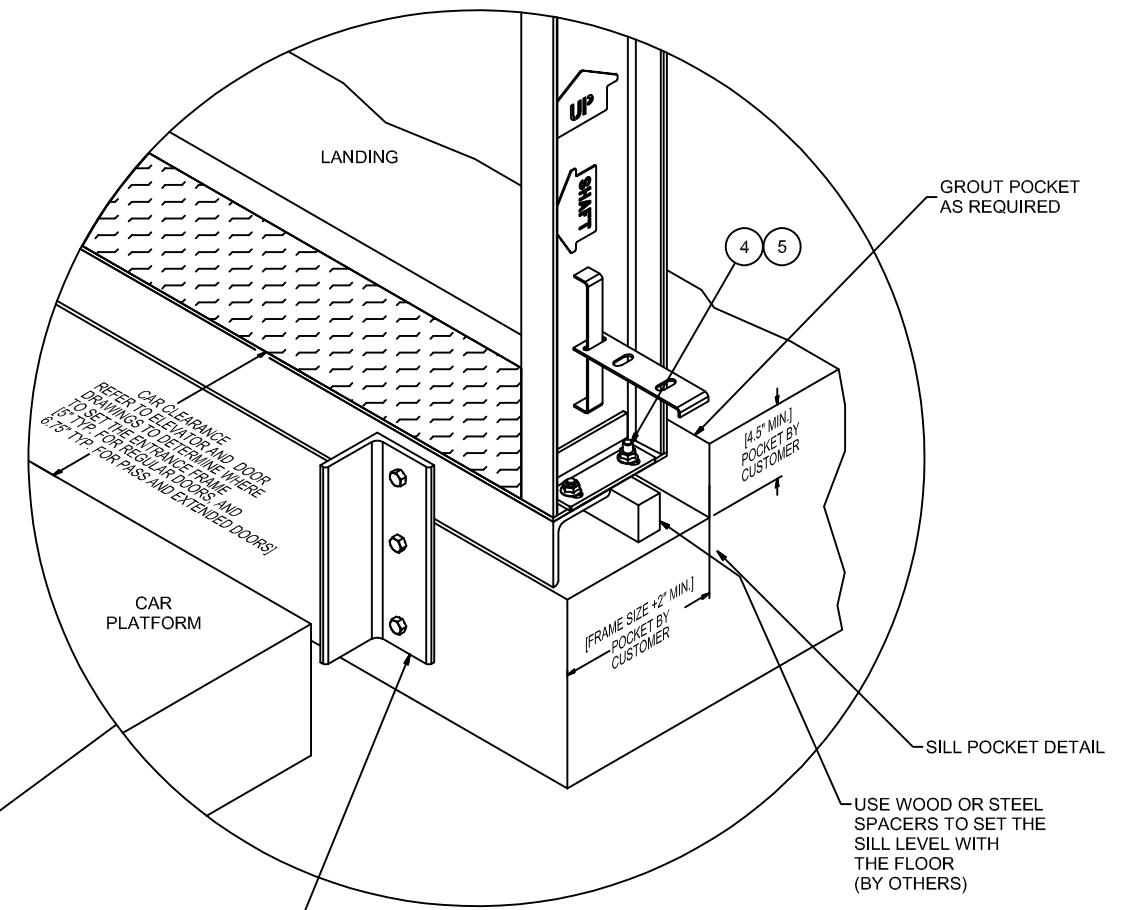


SECTION A-A

REFERENCE DRAWING



VIEW FROM
HOISTWAY / SHAFT



SILL POCKET DETAIL

MANUFACTURING NOTES:
1. ALL HOLES TO BE DIAMETER 9/16" THRU EXCEPT WHERE NOTED

FIELD NOTES:
1. ENTRANCE FRAMES FOR FREIGHT ELEVATORS ARE NOT DESIGNED TO SUPPORT OVERHEAD WALL LOADS. CUSTOMER MUST PROVIDE SUITABLE MEANS TO SUPPORT THESE LOADS.

2. GROUTING OF CONCRETE MASONRY UNITS AND SILLS REFERENCES
ASTM C476 - Coarse grout.
ASTM C404 - Aggregates for Masonry Grout.

GENERAL
1. Perform work in accordance with requirements of CSA-A23.1 unless indicated otherwise on drawing.
2. Add admixtures in accordance with manufacturer's instructions; mix uniformly.
3. Do not use anti-freeze compounds to lower the freezing point of the grout.
4. Lay concrete masonry units (CMU) using masonry mortar in 24" lifts maximum. Install masonry ties into coursing block joints at maximum 24" oc vertically as shown on drawing. Fill CMU voids with non-shrink grout as work progresses. All CMU voids to be filled full height, 24" either side of door frame.
5. At door sill use dry pack grout. Use bonding agent between grout and substances as may be required.

GROUT MIXES
1. Dry pack grout: Non-shrink compound of non-metallic aggregate and water, Mixed with sufficient water for mixture to make a sound, solid pack, capable of developing compressive strength of 35 MPa at 28 days.
2. Non-shrink grout: Pre-mixed compound consisting of non-metallic aggregate, cement, water reducing and plasticizing agents. Pre-mixed in accordance with manufacturer's instructions to obtain a minimum compressive strength of 16 MPa in 24 hours and 50 MPa in 28 days. Acceptable non-shrink grouts:
3. Masterflow 713 Grout
4. Master Builders Set Non-Shrink Grout
5. Sika Grout 212
6. Stenson M-Bed Standard Grout
7. CPD Non-Shrink Grout
8. SonogROUT

TEMPORARY SUPPORTS USE ANGLE OR FLAT TO HOLD SILL LEVEL ADDITIONAL SUPPORTS MAY BE REQUIRED AT THE HEADER (BY OTHERS)

6	1	JAMB ASSEMBLY RH - MASONRY TO LINTEL
5	8	1/2-13 HEX SERRATED FLANGE NUT
4	8	1/2-13 x 1 1/2" Lg HEX HD BOLT Z
3	1	HEADER - MASONRY TO LINTEL
2	1	JAMB ASSEMBLY LH - MASONRY TO LINTEL
1	1	SILL ASSEMBLY
ITEM	QTY	DESCRIPTION

TOLERANCES	
0"	±.1"
0.0	±.164
0.0	±.020
0.00	±.010
0.000	±.005
UNLESS OTHERWISE SPECIFIED DIMENSIONS ARE IN INCHES.	
WHERE APPLICABLE, REMOVE ALL BURRS & SHARP EDGES.	

THIRD ANGLE PROJECTION
THIS DRAWING IS THE CONFIDENTIAL PROPERTY OF THE PELLE COMPANY AND MAY NOT BE COPIED, REPRODUCED, TRANSMITTED OR TRANSFERRED IN ANY MANNER OR FORM, OR USED FOR ANY PURPOSE WITHOUT THE WRITTEN CONSENT OF THE PELLE COMPANY.

	FINISH		
	REV	SCALE	SHEET
TITLE ENTRANCE FRAME MASONRY TO LINTEL	-	NTS	1 OF 1
MM/DD/YY DRAWN BY	-	DRAWING MASONRY REFERENCE	